

Hawkesbury Area Women's & Kids Services Collective Inc.

The Women's Cottage



Annual Report 2021 - 2022

Cover Photo: A painting by Lee Sheffield in honour of Melanie and her love of working to support women and her time in our team at The Women's Cottage.



The Women's Cottage

Hawkesbury Area Women's & Kids Services Collective Inc.

22 Bosworth Street (PO Box 305)

Richmond, NSW 2753

Phone: (02) 4578 4190

Email: manager@womenscottage.org.au

Website: <http://www.womenscottage.org.au>

The Women's Cottage Management, Staff, Volunteers and Students acknowledge the Darug People as the Traditional Owners on this Land where we live and work.

We pay our respects to all Aboriginal people and to Elders past, present, and future. We recognise and acknowledge the ongoing effects of colonisation, oppression, racism, injustice, and inequity that impacts Aboriginal people today and we commit to address these issues wherever we can.

We stand with you and support First nations Voice enshrined in the Constitution.



The Uluru Statement from the Heart

“We, gathered at the 2017 National Constitutional Convention, coming from all points of the southern sky, make this statement from the heart: Our Aboriginal and Torres Strait Islander tribes were the first sovereign Nations of the Australian continent and its adjacent islands and possessed it under our own laws and customs. This our ancestors did, according to the reckoning of our culture, from the Creation, according to the common law from ‘time immemorial’, and according to science more than 60,000 years ago. This sovereignty is a spiritual notion: the ancestral tie between the land, or ‘mother nature’, and the Aboriginal and Torres Strait Islander peoples who were born therefrom, remain attached thereto, and must one day return thither to be united with our ancestors. This link is the basis of the ownership of the soil, or better, of sovereignty. It has never been ceded or extinguished and co-exists with the sovereignty of the Crown. How could it be otherwise? That peoples possessed a land for sixty millennia and this sacred link disappears from world history in merely the last 200 years. With substantive constitutional change and structural reform, we believe this ancient sovereignty can shine through as a fuller expression of Australia’s nationhood. Proportionally, we are the most incarcerated people on the planet. We are not an innately criminal people. Our children are alienated from their families at unprecedented rates. This cannot be because we have no love for them. And our youth languish in detention in obscene numbers. They should be our hope for the future. These dimensions of our crisis tell plainly the structural nature of our problem. This is the torment of our powerlessness. We seek constitutional reforms to empower our people and take a rightful place in our own country. When we have power over our destiny our children will flourish. They will walk in two worlds and their culture will be a gift to their country. We call for the establishment of a First Nations Voice enshrined in the Constitution. Makarrata is the culmination of our agenda: the coming together after a struggle. It captures our aspirations for a fair and truthful relationship with the people of Australia and a better future for our children based on justice and self-determination. We seek a Makarrata Commission to supervise a process of agreement-making between governments and First Nations and truth-telling about our history. In 1967 we were counted, in 2017 we seek to be heard. We leave base camp and start our trek across this vast country. We invite you to walk with us in a movement of the Australian people for a better future.”

Table of Contents

Who Are We?.....	6
Thanking Our Supporters 2021 - 2022.....	8
Staff and Management Collective 2021 – 2022	10
Management Collective Report 2021 - 2022	11
Manager’s Report 2021 - 2022	12
A Special Tribute to The Women’s Cottage Team	13
Additional Funding and Donations 2021 – 2022.....	14
Renovation Update	15
Safe Places Crisis Accommodation Partnership Report	16
Responding to COVID-19 in 2021 - 2022	17
Compounding Impact of Multiple Natural Disasters.....	18
Thinking Globally / Acting Locally: Sustainable Development Goals (SDG’s)	19
The Women’s Cottage SDG’s Contributions 2021 – 2022	20
Online Community Engagement 2021 - 2022	22
Occasions of Service for ALL Projects July 2021 – June 2022	25
Special Projects Summary	26
- COVID-19 Regional Partnership Grant.....	27
- Financial Hardship Support Provided in 2021 to 2022	28
- Women’s Safety & Selfcare Packs	29
- BUPA Community Grants Group Work	30
- Supporting Local Aboriginal Women Group	31
- Hawkesbury Action Network Against Domestic Violence	32
- COVID Domestic Violence Casework Outcomes February to December 2021	33
- Domestic Violence Casework Bridging Project January to June 2022	37
- Young Women’s Health & Wellbeing Program	38
- Art Therapy Groups Online.....	39
- External Groups 2021 - 2022	40
- National Redress Pilot Project Initiatives 2021 - 2022	41
Targeted Early Intervention Project Outcomes 2021 – 2022	42
National Redress Support Project Outcomes 2021 - 2022.....	46

National Redress Client Well-Being Project Report	48
Redress Support Project Worker Report 2021 - 2022.....	49
WAVE Worker Report 2021 - 2022	51
WAVE Worker Report 2021 - 2022	52
Anti-Violence Worker Report 2021 – 2022.....	54
Student Report 2022	56
Finance Worker Report 2021-2022	57
Financial Accounts and Audit Report 2021 – 2022	58
Appendix 1] ACNC Summary	72
Appendix 2] How Can You Help?	73
Appendix 3] Association Membership Application Form	75



Who Are We?

Hawkesbury Area Women's & Kid's Service Inc.

The Women's Cottage

In 1983, The Cottage opened its doors for the first time in premises at Windsor Street, Richmond. In 1986, The Women's Cottage moved to its current premises at 22 Bosworth Street, Richmond. Over the years, the Cottage has grown, along with the population in the Hawkesbury. There are currently 10 amazing part-time staff as well as wonderful relief workers, students and volunteers that support the work of The Cottage as we strive to provide services and support for women, children, and young people in the Hawkesbury region.

The Women's Cottage is a place where all women; regardless of age, class, race, religion, or sexual preference; are valued and treated as equal. It is a place for women to nurture themselves, a place of safety, and a place to learn and grow. It is a place for all women. It is a place that believes that access and equity are more than ideas and principles, they drive how we operate and what we offer.

The Women's Cottage is an information, resource, referral, advocacy, and crisis support service for women and children living, working, or studying in the Hawkesbury region. NSW Department of Communities and Justice (DCJ) funds our Anti-violence work, 'drop-in' support, advocacy, and referral services and up to two group programs under the Targeted Early Intervention (TEI) funding program. All other group programs are self-funded and reliant on past, present (and future) community donations.

The Women's Cottage also received funding from the Department of Social Services (DSS) for our National Redress Support Project. This project initially provided support services to women affected by the work of the Royal Commission into Institutional Responses to Child Sexual Abuse. It has now evolved into the formation of the National Redress Support Project, providing specialist counselling / casework support to women who are considering making a claim application for Redress. The National Redress Scheme started July 2018 and is set to run for 10 years. This project covers the area from Parramatta to Lithgow but does not turn away out of area requests for assistance. In these situations, we work with women via phone and video calls while connecting them to services closer to where they live and/or on an ongoing basis if local Redress Support Services are not available.

The Women's Cottage is a Feminist organisation. Strength-based and trauma informed approaches inform all our work. All work is within the context of understanding social inequity and the gendered nature of violence that impacts women's lives, and through the Feminist framework lens that acknowledges and supports women's self-determination as the central expert in their own lives.

The Women's Cottage is committed to our role as advocate for social justice, for women and children in this Community.



Vision Statement

Hawkesbury Area Women and Kids Services Collective Inc. (The Women's Cottage) is a Feminist community-based organisation that is run by women for women and children / young people.

We are committed to all forms of freedom for women and children.

We are committed to an ecologically and socially just and diverse society, where all women are valued and treated as equal.

We are committed to assisting and supporting women and children to determine their own lives and choices.

We uphold women and children's rights to a safe environment whether within the home or in the community.

We actively pursue political measures to address the elimination of social and environmental oppression, injustice, and violence, locally and globally.

Objectives

1. To help alleviate poverty, misfortune, distress and suffering of women and children in the Hawkesbury region and surrounds through direct provision of material aid, emergency accommodation / referral services, counselling, and other services to improve their lives directly.
2. To promote the health, education and welfare of disadvantaged women and children, particularly those residing in the Hawkesbury Shire.
3. To collect and distribute information for individuals and groups concerning services and issues of relevance to disadvantaged women and children.
4. To reduce the isolation of disadvantaged women by encouraging the development of support networks and self-help activities.
5. To provide emotional and practical support to disadvantaged women and children.
6. To promote full public participation in the planning of services based at the centre.
7. To promote public discussion on issues relevant to disadvantaged women and children.
8. To reduce the oppression of women and children regardless of age, class, race, religion, or sexual preference.

Thanking Our Supporters 2021 - 2022

The Women's Cottage could not continue without the generosity of individual and community donations and support. We offer our sincere thanks to everyone who has donated, through cash donation, groups program support, membership fees, Go Fund Me, groceries for hampers, time, and energy.

Bendigo Bank – for hosting a donation box throughout the year.

BUPA – For the donation of \$10,000 to fund Wrapped in Angels groups.

Computus Australia – for IT support and donation of time.

Foodbank NSW – for access to food items at low cost.

Good 360 – for access to low-cost clothes, toys, sanitiser, and other items.

Hawkesbury Gazette – reduced costs for promotion / media releases.

Kurrajong North Richmond Rotary Club – For their ongoing support.

Lions Club Richmond – Christmas Cakes / Puddings and Donations for food Gabrielle Fund.

M.T.O. Shahmaghsoudi School of Islamic Sufism, Sydney – food parcels.

NRMA Richmond - for hosting and supporting the 2021 Christmas Tree in their branch.

Richmond Marketplace – Christmas Appeal support.

Share the Dignity – Handbags and Sanitary products.

U 3A quilters – Who made lovely quilts which were used as Christmas presents and comforters during the year for clients as well as a cash donation.

WestRoc North Richmond – Christmas Appeal donations.

Yvonne – put together donation of school supplies.

Zonta Club Cumberland West – donations for emergency Relief.

Cash and Other Donations: D Hartz, E Reid, L Rowan, T Steward, J Irwin, S Besseau, Embroiderers and Quilters of the Hawkesbury, Think Winx on behalf of Richmond Marketplace (1,100).

Donations via PayPal Giving Fund: M Losurdo, K Paull, G Paull, A Duff, S Tromp, J Reefman, (1,000) D Mansfield (1,000) Tass & Pom, G Weller, J Castle, P Williams, P Baker, R Davis, E Pickering.

Individual Donations: P Thompson, A Maree, P Suters, L Shelvin, H Lewington, El Cossins, J Buchan, B Bailey, S Vella, R Vanderburg, L Xerri, I Cunningham, S Templeman, D Davenport, PA & C Perkins, J Wright, D Cunningham, S Arthur, K Amber, D Jenner, B Laurel, A Ifield, B Holdsworth, J Feeney, John & Barbara, G Wilson, Jeneris, P Osland, El Gatt, Y Bailey, E Krix, G Whiteley, St Matthews school, M Loughlin, C Tucker, A Powel, CA Rickert, Melissa who donated a Coles order for women in need.

Thank you also to those who are Supporters of the Building Extension who donated through the GoFundMe campaign and those who wished to remain anonymous.

Thanking Our Supporters 2021 - 2022

Major sponsors who donated the equivalent of \$5,000 or more:



Hawkesbury City Council – for a 30-year lease at \$1 per year for our premises at 22 Bosworth Street Richmond in support of vulnerable women and children in the Hawkesbury.

\$20,000 Cubitt's Granny Flats and Home Extensions – towards our new building



\$11,805 cash donations came from the community for the Gabrielle fund in Memory of Gemma Thompson who sadly passed away following a car accident in 2021.

\$5000 Individual donation from M Cunningham



**Please consider donating to The Women's Cottage this coming year.
ALL donations over \$2 are tax deductible**

The GoFundMe Campaign to fit out the new extension is still open

<https://www.gofundme.com/f/womens-cottage-domestic-violence-support-space>

Staff and Management Collective 2021 – 2022



Management Collective

Janine Madden
Jude Irwin
Mary Conyard
Parvinder Gill
Sonya Parker
Maria Losurdo

Permanent / Part Time Staff

Maria Losurdo	Manager
Meg Keith	Finance Manager
Mel Olsen	Anti-Violence
Sam Campbell	DV Casework (left Jan 2022)
Melissa Brodie	WAVE Worker / DV Casework
Kim Ward	WAVE Worker
Jess Reed	WAVE Worker
Angie Gleeson	Redress Specialist
Sarah Dillane	Redress Specialist
Kelly Haines	Redress Specialist Support

Casual / Relief Workers

Emma Belling	DEX / Database Support / WAVE Relief
Caitlin Brodie-Davies	Relief WAVE Support Worker

Students

Simone Cooper
Usharani Nishchal

Local Suppliers helping to keep The Women's Cottage looking great!

Karen Brown	Cleaner
Arben Gashi	Gardener



Management Collective Report 2021 - 2022

2021-2022 has seen many challenges in the Hawkesbury area, with floods and the continuation of Covid-19.

Whenever The Women's Cottage had to close the doors during these times workers have kept the service going by staying in contact with clients who need to access the service.

The Management Collective would like to acknowledge all the staff, including the Manager who are loyal, diligent, generous of spirit, compassionate and committed to the women and children of the Hawkesbury. They are awesome!!!!!!

The community continues to support The Women's Cottage and we would like to say thank you to the community. The Women's Cottage has been successful in securing a number of grants which has given us the capacity to extend our hours.

We were hoping to have started our extensions this year, sadly this has not happened, however, we are hopeful this will start soon. We look forward to next year when we will be in our new extension and celebrating 40 years of service in the Hawkesbury.

The Management Collective has stayed in contact each month to discuss key issues, conducting our meetings via zoom. This has been great to keep up to date with what is happening, technology can be very helpful when put to good use.

The Management Collective, Jude, Janine, Sonya, Parvinder, Maria and Mary would like to say thank you.



Mary Conyard on behalf of
The Women's Cottage
Management Collective.

Manager's Report 2021 - 2022

I write this report in September 2022. The world is emerging from close to 3 years of COVID-19 and a worldwide pandemic. I am proud to say again that as a service we remained open through all COVID lockdowns and disruptions. We found new and different ways to continue to support women. Sometimes through work from home, online, via phone and when needed in person. Most importantly our centre doors stayed open and responsive to all emergencies and urgent needs. We also worked together to work on COVID safety planning, vaccine policies and weekly monitoring via PCR and RAT testing to keep everyone as safe as possible.

In addition, a new Constitution was adopted, and a new Policy and Procedure Manual was written. Many thanks to Samantha Campbell.

COVID specific funding was used to continue DV casework and to increase our capacity to support families in lockdown with food vouchers and other assistance. Online voucher systems were developed to provide remote assistance where needed.

Our Redress Workers have moved from office to home-based work during periods of lockdown without reducing contact and support to clients. Additional COVID support and welfare checks for clients were also provided. With much effort also put into the development of group program and work practice resources.

Our Anti-violence worker moved to home-based service delivery during lockdowns without losing contact with meetings and groups and helped keep other local workers connected during difficult times.

Our finance worker continued a very full workload from office and home.

Sadly, we said goodbye to Sam at the end of the COVID DV funded project and thanked Melissa for stepping into a transition role.

As at the writing of this report all workers are back to office-based work and face to face contact with clients.

All this could not have happened if not for the dedication, commitment, and courage of the whole team. I cannot fully express how much the commitment of the whole team has been during these difficult times. And the commitment and energy that is now turning to supporting ourselves and our clients to venture back out into the world and to strengthen community connections and belonging.

Maria Losurdo, Manager

Paid Staff

“Thank You”

“Thank You”

“Thank You”

Angela Gleeson

Emma Belling

**Caitlin Brodie-
Davies**

Jess Reed

Kelly Haines

Kim Ward

Maria Losurdo

Meg Keith

Mel Olsen

Melissa Brodie

Sam Campbell

Sarah Dillane

“Thank You”

“Thank You”

“Thank You”

A Special Tribute to The Women's Cottage Team

Now into the third year of COVID and multiple natural disasters, the amazing team of women working at The Women's Cottage continue to show their commitment skills and courage to keep going. Holding our own increased stress while responding to rapid and ongoing increases in client numbers and community needs.

- Continuing to support their own communities / families.
- Driving the long way around to get to and from work during floods.
- Setting up home offices (again) continuing to work at full capacity.
- Keeping services going from The Women's Cottage and responding quickly to women in crisis.
- Increased demands of having to adjust to new technologies and different ways of service delivery.
- Covering extra shifts and supporting teammates going through hard times.
- Going above and beyond keeping in contact with clients and providing extra contact and support throughout COVID to support and relieve emotional distress, isolation, and financial hardship.



A story mirrored across many parts of the community sector, and one recognised with respect and gratitude by The Women's Cottage Management team and the women and children we support.

Additional Funding and Donations 2021 – 2022

The Women's Cottage has received a range of grants and large donations this year that have assisted the service to expand service delivery to ever increasing community needs.

NSW Government COVID DV Funding Round 1: This funding allowed us to provide DV casework and extended open hours on Saturdays until December 2021. While this was welcomed the overall issue of a lack of funding for DV casework remains.

PayPal / PayPal Giving Fund: PayPal approached The Women's Cottage after the major floods in early 2021 with a \$50,000 donation. These funds supported devastation for flood victims and the escalation of need (and domestic violence) that follows natural disaster. The funds remaining by as at January 2022 supported us to continue DV casework until further longer-term funding was secured. PayPal has also nominated The Women's Cottage for donations from PayPal Giving Fund, offering PayPal customers opportunity to donate directly. These funds assist us maintain increased open hours.

NSW Government Social Sector Transformation Fund (SFFT - \$47k) was received over the past 2 financial years was for IT and related upgrades. These funds paid for website upgrades, new phone equipment, data scanning and security, enhanced capacity to run online groups via audio-visual equipment and new laptops and computers.

NSW Government COVID DV Funding Round 2 (\$250k): Was received to support our renovation in support of increasing service to women impacted by domestic and sexual violence. Due to COVID delays, permission was granted to extend expenditure to June 2023.

DCJ Regional COVID Partnership Grant (\$60k) was received to provide emergency food and petrol vouchers to families impacted by COVID. These funds also increased service delivery capacity that helped support families impacted by COVID and 2 major flooding events during the year.

DCJ Social Sector Support Fund (\$65k) These funds were extended to the baseline funding of all DCJ funded services during COVID. These funds contributed to extended open hours and increased WAVE staffing that was not covered by other grants.

BUPA - \$10,000 grant to run 2 x 10 week Wrapped in Angels groups.

LCSA – \$5000 grant for care packs for women impacted by the floods.

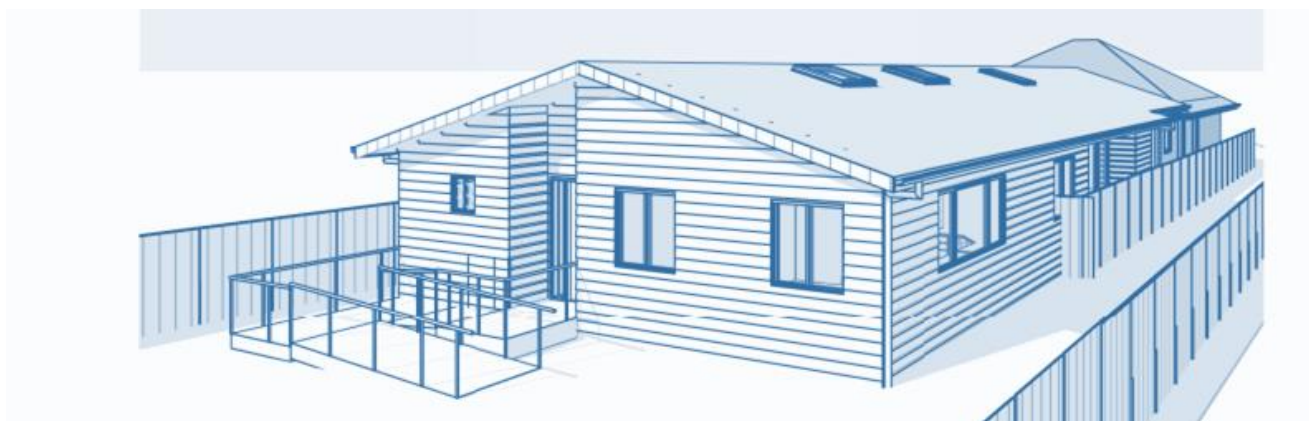
Winmalee Neighbourhood Centre – emergency relief outreach partner.

NSW Office of Responsible Gambling (\$109k x 2 years) at the end of 2021/22-year negotiations were finalised to secure 2 years funding for continued DV casework services. These funds will also be used to increase awareness and response to the impacts of gambling and in particular the relationship that can exist between gambling and domestic violence.

Community Donations: Many individuals and groups continued to support the Women's Cottage over the past year with donations of money and food. All are listed on our acknowledgment page. We extend our ongoing thanks and gratitude to everyone who has helped us help vulnerable women and children through a very tough year for everyone.

Go Fund Me Campaign: Was established to keep the community connected with our renovation plans and to invite individuals and business to support the fitting out of the extension once it is built.
<https://www.gofundme.com/f/womens-cottage-domestic-violence-support-space>

Renovation Update



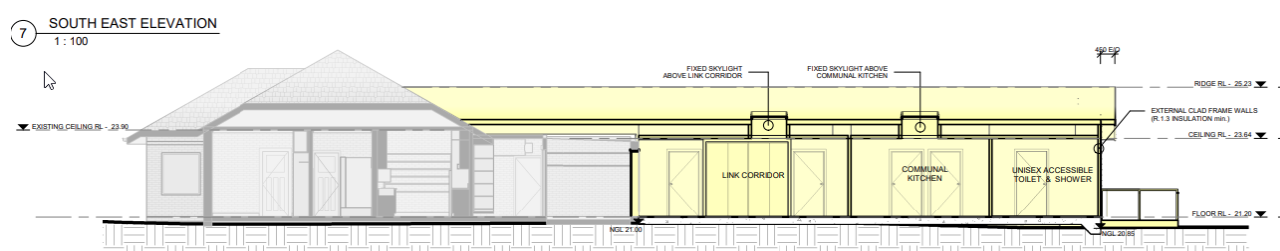
The Women's Cottage has been in its current location at 22 Bosworth Street for close to 40 years. These premises are a small residential scale cottage owned by Hawkesbury City Council. The Women's Cottage has a 30-year lease on the building.

Growing community needs over many years and the significant impacts on the community in more recent years (from drought, fires, floods, COVID and more flooding) has placed enormous pressure on local families. This has led to significant increases in financial hardship, isolation, stress, mental health issues and the rates / severity of domestic violence.

The extension will give The Women's Cottage the space to provide more services and groups for the Hawkesbury community as well expanding the availability of on-site workers.

The project funding was finalised in 2021 / 2022 and is fully funded through a variety of Government grants, community donations, donations from the builder and internal reserves. Building contracts were signed with Cubitt's Granny Flats and Home Extensions in liaison with Hawkesbury City Council and the DA was submitted early 2022. The builders are contributing \$40k towards the overall costs.

COVID and flooding events have delayed the start of works, but it is hoped that building will be underway by the end of 2022 and completed before June 2023.



Safe Places Crisis Accommodation Partnership Report

In 2020, The Women's Cottage partnered with Link Wentworth Housing Ltd in support of a Federal Government funding application to build short term accommodation for women and children (and their pets) escaping domestic and family violence. This application was successful and around \$1.3M was awarded to Link Wentworth for the cost of the build. The Women's Cottage role will be to support the development and implementation of the service and support model for residents and to support the ongoing oversight of planning, evaluation and running of the premises. This wonderful outcome is the culmination of over 30 years of local lobbying from local services and the community.

After much effort and many COVID related delays the DA was approved, and work commenced in August 2022. The building is due for completion in April 2023.



The Women's Cottage, Link Wentworth Housing, and Nurreen Link Wentworth DV service have worked tirelessly together with other stakeholders to develop an operation manual, resident manual and policies and procedures. Safety and emergency response MOU's have been established with Police and Evaluation strategies developed, including a partnership with Western Sydney University for an ongoing action research project to determine the ongoing benefit for women and children using the service.

Hopes for Expansion: The existence of Safe Places and all the work already completed in preparation for the service to begin have opened the opportunity to expand into a Women's Refuge. The Women's Cottage and Link Wentworth Housing partnered in an EOI to the DCJ Core & Cluster Tranche 2 funding that opened in September 2022. **If successful, this would allow for a second crisis accommodation building beside Safe Places and staffing for a fully integrated women's refuge across both sites.** Still waiting to hear on the outcome of this very exciting possibility. Hopefully in our next report we can speak to the plans to get this new expanded project up and running.... **Stay Tuned!**

The Core & Cluster Program is a crisis accommodation model that moves away from a shared house environment, to having fully independent living quarters with private bathroom and kitchen facilities. It combines the services and supports of a traditional refuge with the independent living facilities of transitional accommodation. (DCJ 2020)

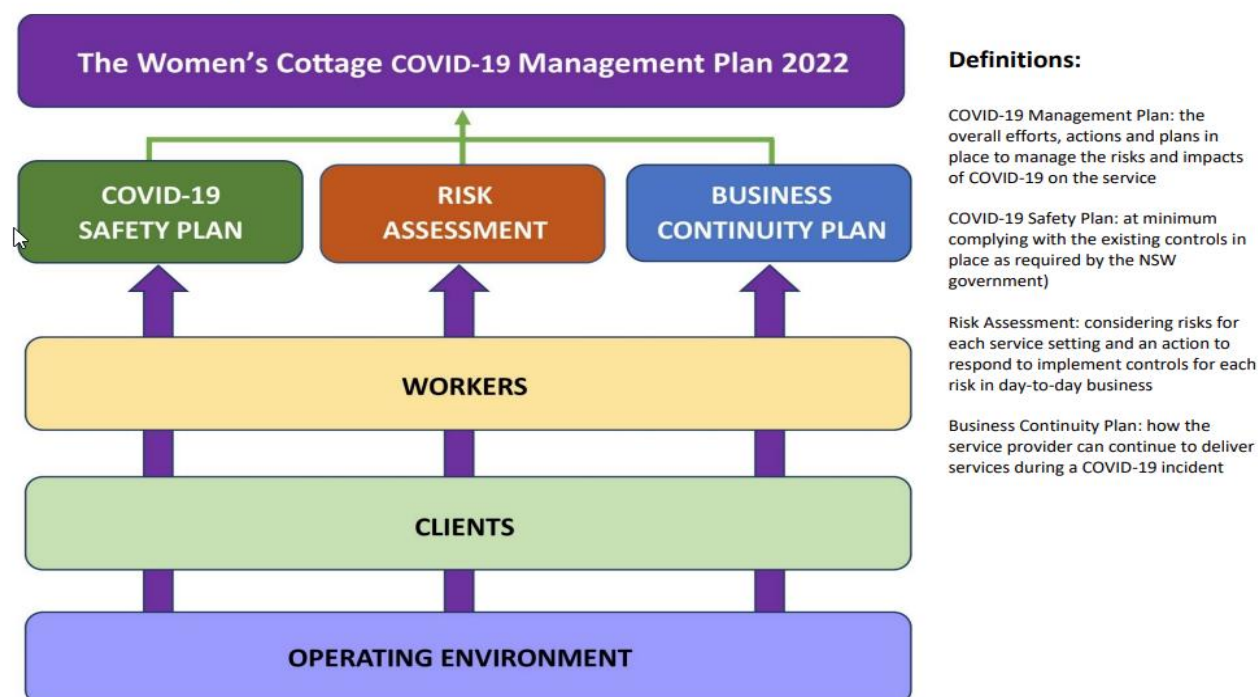
Responding to COVID-19 in 2021 - 2022

The doors of The Women's Cottage remained open for crisis drop-in during normal opening hours through all lockdowns. Onsite service delivery for WAVE and Domestic Violence casework continued via phone and where needed in person throughout the 2021 – 2022 year. Systems were developed and maintained to provide contactless provision of food hampers and emergency relief. Priority responses were provided in person and over the phone to clients in crisis and/or clients experiencing safety concerns. National Redress Support Project maintained client contact and application support via home-based services. Anti-violence community development was provided from work from home and online. Online Art Therapy groups were also provided.



Enhanced systems were also maintained in response to rapidly changing restrictions, COVID cases and contact lists to guide workers and to strengthen our internal screening procedures. Including QR Code check-in systems, masks and internal safety measures, staff COVID surveillance testing and new vaccine policy and procedures. Overall work practice in responses to the pandemic were guided by the development and ongoing updating of a new COVID Management Plan.

COVID-19 Management Plan Overview:



Compounding Impact of Multiple Natural Disasters

The Hawkesbury and surrounding communities have been hit very hard from multiple disasters of past years. Ongoing impacts of a long history of drought, the devastating fires of 2019/20, followed by flooding then the first wave of COVID, then massive flooding in March 2021 and an even more devastating flood in 2022. The individual and collective distress and loss from these events are on top of (and exasperated by) the ongoing waves of the Delta and Omicron COVID variants.

The Women's Cottage has seen the impacts from these multiple natural disasters taking different forms for the women and children coming to the Cottage for help:

- Increased domestic violence
- Increased severity of violence
- Increased complexity of needs and issues
- The use of COVID restrictions to further isolate women and as a form of threat and coercion
- Significant decreased availability of affordable housing and crisis accommodation
- Increased financial disadvantage and distress and need for emergency relief
- Increased stress, distress, and anxiety
- Fear for children's education
- Parent / children home schooling distress
- Increased despair / feelings of not coping

Domestic Violence and Safety Risks Can Increase After Natural Disasters



**Support for Friends, Family,
Neighbours or Yourself.**

In response to increased needs and demands The Women's Cottage put a number of additional initiatives in place:

- Increased access to food and petrol vouchers, including online access from DCJ Regional COVID Partnership project.
- Developed a new community resource on increased risks of domestic violence after natural disasters.
- 100 Safety and Self-Care Packs for women impacted by flooding in partnership with Local Community Services Association Community Trauma Response Project.
- Community forums in partnership with Hawkesbury City Council Community Recovery Hubs to support local women leaders and other community leaders to better understand the risks to women after natural disaster and how to best support vulnerable women in their local community.
- **Developed / implemented internal Flood Planning and Recovery Plan to support rapid pivots, continued service delivery and staff / client safety during flood events.**

Thinking Globally / Acting Locally: Sustainable Development Goals (SDG's)

The United Nations describes the SUSTAINABLE DEVELOPMENT GOALS as the blueprint to achieve a better and more sustainable future for all. They address global challenges of poverty, inequality, climate, environmental degradation, prosperity, peace, and justice. The SDG's interconnect and seek to leave none behind, with a 2030 achievement target.



The Women's Cottage recognises the valuable role we play by providing a community centre that offers women and children a place to go where they can get information, support and where they can experience a sense of belonging and safety. For many women, who have not experienced this before in their lives, this offers a new window of possibility into what they deserve and could have for themselves and their family. The Women's Cottage also recognises the importance of standing for the rights of all women in the community regardless of race, religion, sexuality, lifestyle, family make up, and for women with and without children. The work done at The Women's Cottage is vital for supporting the rights and safety of women and children locally. It is also in line with global efforts to improve conditions and lives. This is highlighted by The Women's Cottage Vision, to:

“Actively pursue political measures to address the elimination of social and environmental oppression, injustice and violence, locally and globally”

The Women's Cottage is working to strengthen our awareness and capacity to do this by using the United Nations 'Sustainable Development Goals' (SDG's) as a framework to identify where we are doing this well and where we can improve our actions.

The Women's Cottage SDG's Contributions 2021 – 2022



What We Did:

- Applied community donations & internal funding to expand the amount and availability of ALL areas of financial and food assistance for women experiencing financial disadvantage and poverty:
 - Emergency Relief and food / fuel vouchers
 - Gabrielle Fund for women in DV
 - Food Relief, (bread, meat, dry goods)
 - Sourcing fresh meat, fruit and vegetables where possible
 - Broadened eligibility during COVID
- Set up contactless options for receiving food hampers and emergency relief
- Advocated for food drop-off and welfare checks with police and other services for families in home quarantine due to COVID-19 Infection
- Established partnership with the 'No Interest Loans' NILS scheme to support women escaping violence.



What We Did:

- Offering physical and emotional support for those impacted by domestic violence, past and present trauma, poverty and hardship via drop-in service and group programs and National Redress Support Services
- Maintaining service delivery during COVID
- Increased resources and services during COVID
- Provided targeted support & care packages during lockdown
- Set up online groups for emotional support



What we did:

- Provided support/ information / advocacy / referral services for individual women experiencing injustice and inequality. Supporting the rights of women and children to be safe and to be treated with dignity and respect, organising public awareness events.
- Reclaim the Night (virtual event)
- International Women's Day (small in person event)
- Stop Domestic Violence / 16 Days of Activism initiatives
- Increased services to women during COVID and increased eligibility for services to those not assisted by Government COVID relief measures.
- Increased the development of resources for community and sector partners during COVID to support women in DV and working with Visa holders
- Increased lobbying and political representation on behalf of women's equity and safety issues, including access to services by non-vaccinated clients
- Increased submissions for funding to address women's equity & safety issues
- Increased use of social media on the rights of women and raising awareness on equity and safety issues
- Assessed and adjusted work practice and consistency to support equal access to available services and resources provided by The Women's Cottage during COVID



The Women's Cottage SDG's Contributions 2021 - 2022



What we did:

- Maintained improved recycling systems and reduced waste:
- Provide fresh nutritious foods for clients & group programs
- Modelled recycling & reducing waste for client participation
- Shared excess food with other services



What we did:

- Supporting women's legal rights
- Access to Apprehended Violence Orders
- Referrals for legal advice /Family Law advocacy
- Advocacy: police, DCJ, court support & SAMS meetings
- Victims Services applications support
- National Redress (Institutional Sexual Abuse) application support and advocacy
- Convening local domestic violence networking group
- Representing the issues of women's rights at local, state, and federal levels
- Partnership with Western Sydney Community Legal Service to provide an in-house Legal Clinic for women impacted by domestic violence
- Providing space for Victims Services approved counsellor for easy access for clients and local women.



What we did:

- Multiple successful new funding partnerships at community, local business, and corporate level to increase services available to vulnerable women and children
- Successful joint submissions with Link Wentworth Housing for new crisis accommodation building
- Second joint submission with Link Wentworth Housing for fully funded / staffed women's refuge to extend the non-staff crisis accommodation.
- Increased partnerships work with Hawkesbury City Council on the local Domestic Violence Action Plan

Participating in the United Nations Sustainability Development Goals reminds us that we can all contribute to the big and small issues facing the planet and, for The Women's Cottage, to issues that are faced by women all over the world.

Our Commitment:

'Actively pursue political measures to address the elimination of social and environmental oppression, injustice and violence, locally and globally'.

Online Community Engagement 2021 - 2022

More than ever before, the impacts of COVID have increased the need to reach out to women and provide online services and information. During the past year, The Women's Cottage has increased its social media presence, kept our website up to date and moved group programs and events to virtual and online formats in relation to COVID and flood updates, emotional well-being, and available support.

Website


www.womenscottage.org.au

Social Sector Transformation Funding was used to develop a new website to make it more accessible and up to date. This included ongoing updates, especially during COVID Lockdowns and times of flooding and increased risks for domestic violence that women face after natural disasters. Easier access to the community donations information and online contributions facility has also increased support for food shelves and emergency relief. The new website also contains new and increased information on our National Redress Project support. **Perhaps most significant is the increase in online requests for assistance that has come through our new website.** Our special thanks to Bianca Freedman for all her expertise and support developing our new website.

02 4578 4190 manager@womenscottage.org.au

[Home](#) [About Us](#) [Specialist DV Services](#) [Domestic Violence](#) [Groups](#) [Projects](#) [Media & Resources](#) [Donate](#) [Contact](#) [National Redress Scheme](#)

Domestic Violence and other safety concerns can increase during times of natural disaster.
It's ok to reach out for help.
[Click here for support options](#)




The Women's Cottage is open during the current COVID-19 outbreak.

But please ring and talk to a worker before coming to the service.
If we can not assist you over the phone we will arrange a safe time for you to come in.

If you are unable to get through, please leave a message and we will get back to you as soon as possible.
If we are unable to help you over the phone, we will make arrangements to see you.

Many thanks and stay safe and well.
Please call 02 4578 4190



The Women's Cottage is running groups again!
[Click to find out more >>](#)

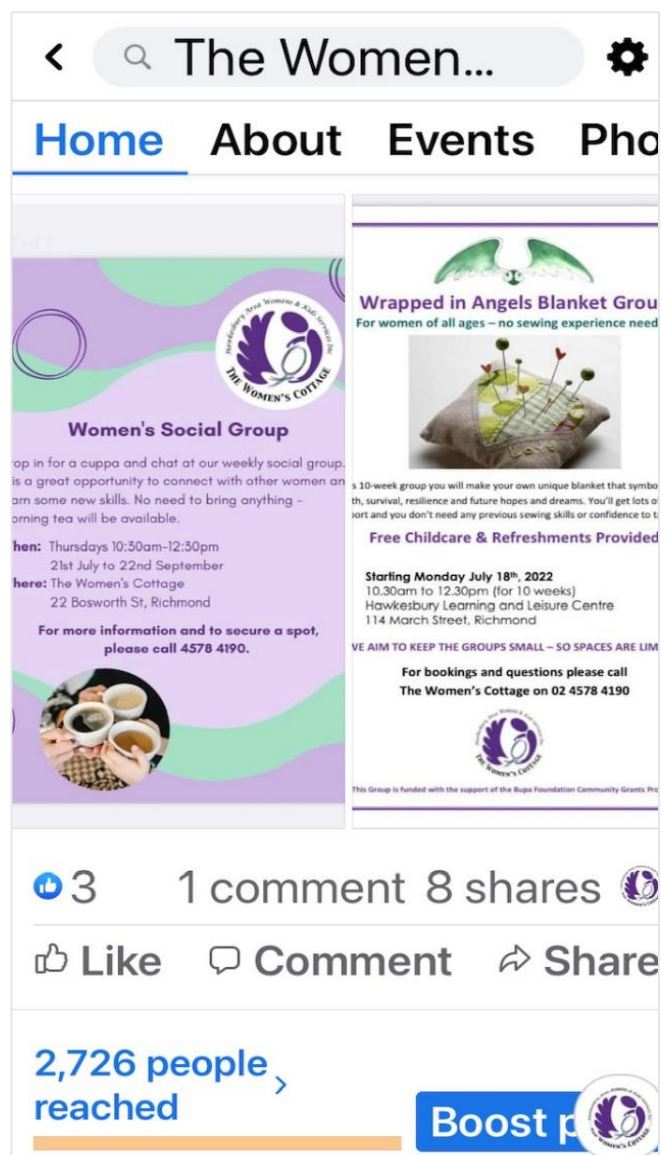
Facebook

<https://www.facebook.com/The-Womens-Cottage-194124280711819>

Our Facebook page currently has over 1,300 followers and women regularly engage with, share and comment on posts. Posts cover a variety of topics that focus on issues of women's rights and safety, community news, resources, self-care. Significant focus was also given to COVID news, flood alerts and available support. Women also use the messaging facility to ask questions about services we offer and/or seek advice for themselves or friends struggling with issues of concern.

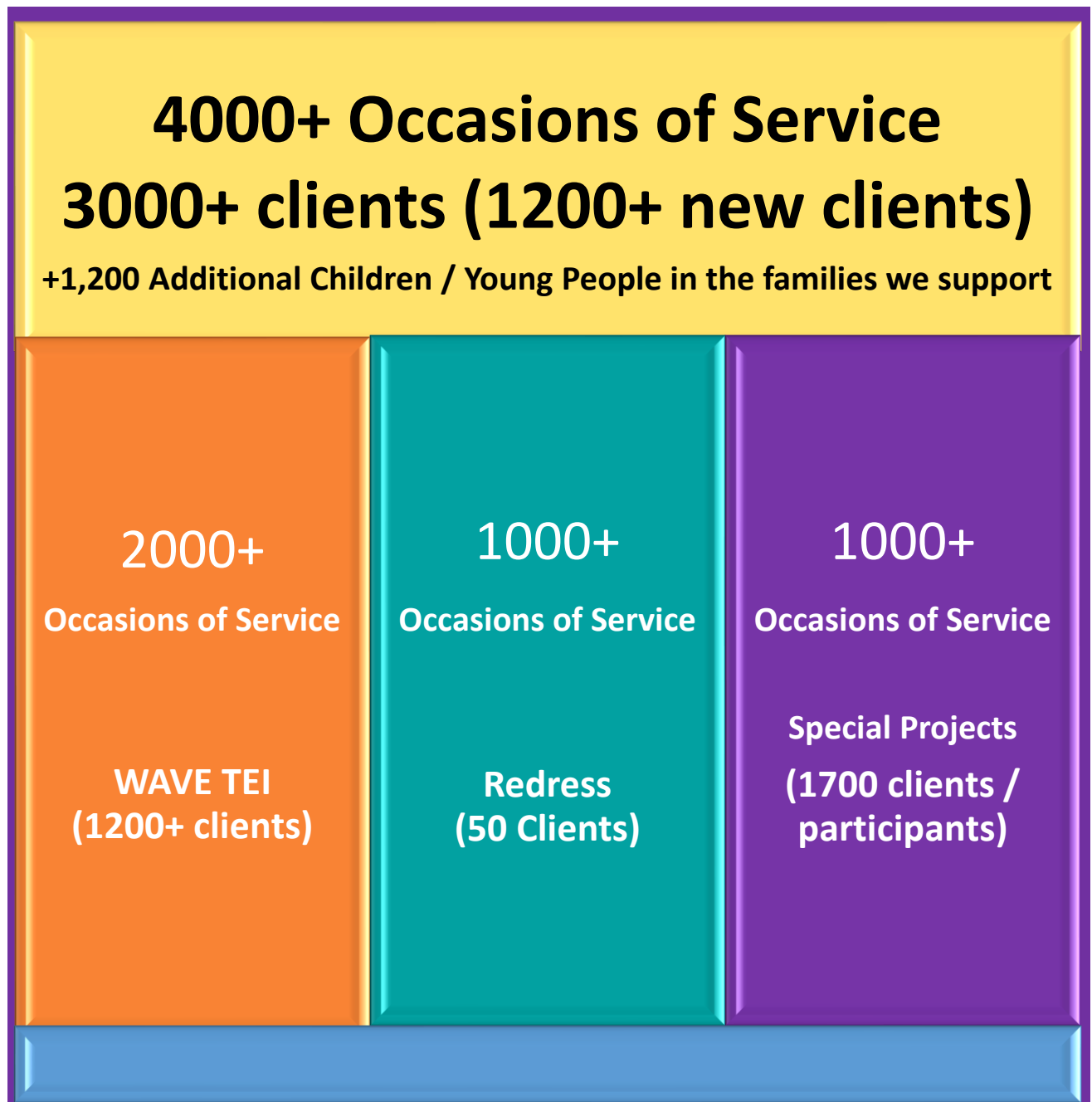
During COVID Requests for info / assistance through Messenger also increased significantly.

A big indication of the impact
of isolation during COVID times and
the need for women to reconnect,
was the reach of our Facebook post
on our first face to face groups that
reached over **2,700 people!**





**Window
Into
Our Work
2021 - 2022**



40% of our work relates to Domestic Violence

**TEI levels 3-5 & special projects (Some Redress clients also impacted by DFV but are not included in this statistic)*

Special Projects Summary

Project	Occasions of service / events	Clients / Participants
COVID-19 Regional Partnership	175	613
Hardship Support	290	400
LCSA - Women's Safety & Selfcare Packs	100	100
BUPA - Groups	10	50
Merana Partnership <small>(participants not included in our stats)</small>	NA	NA
Hawkesbury Action Network Against Domestic Violence	7	72
COVID DV Casework Project Client work	288	44
COVID DV Casework Project Sector Events	25	75
DV Casework Bridging Project	126	15
Young Women's Health & Wellbeing Project	6	269
Art Therapy Groups	8	24
External Groups <small>(participants not collected during COVID)</small>	NA	NA
Redress Resources	3	50
	1038	1712

The above information on special projects covers initiatives NOT already included in WAVE TEI statistics



COVID-19 Regional Partnership Grant

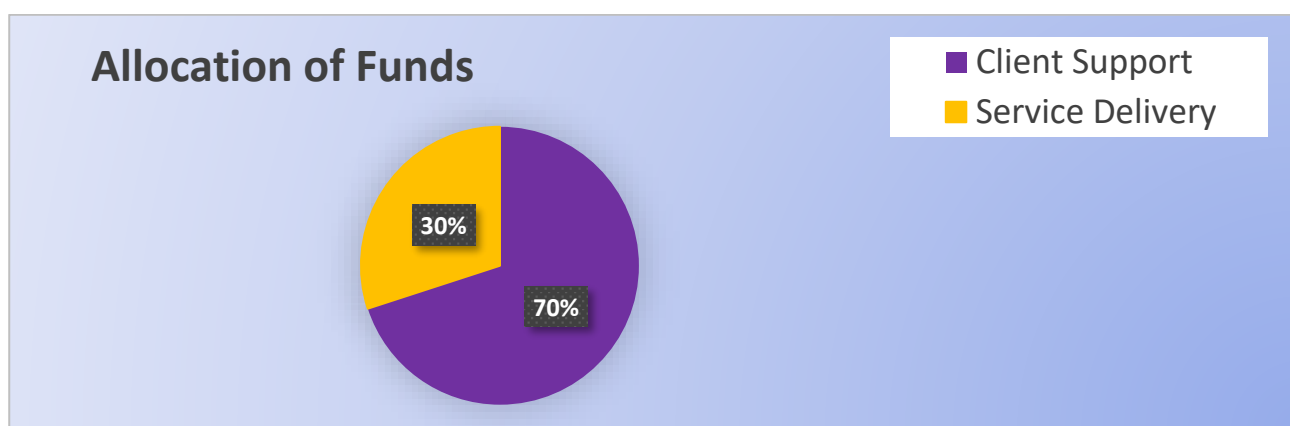


The NSW Government COVID-19 Regional Partnership Grant distributed grant funding to non-government organisations (NGOs) that primarily deliver services in regional New South Wales.

The purpose of the grant funding was to:

- Support vulnerable people and diverse communities in regional NSW including people required to isolate due to COVID-19
- Provide additional funds to eligible service providers to increase the support they are already providing to vulnerable people in the community, in response to COVID-19.

The Women's Cottage received \$60,000 (1 of 55 services funded in NSW)



175 families (613 adults & children) were supported from Nov 2021 - May 2022

During the height of the lockdown and infections, many families were isolating with extended family and multiple people sick at one time. For some of the families we assisted included up to 10 people in isolation in the same household who were unable to earn income or purchase food.

Direct support was provided through electronic food vouchers that could be used by isolating families for online food deliveries.

\$40,441	Electronic Food Vouchers
\$300	Electronic Petrol Vouchers
\$721	Food delivered to clients at home

COVID-19 Support

available at

The Women's Cottage



The Women's Cottage has received additional funding from the NSW Government to support people in the Hawkesbury region who may be experiencing financial hardship or other needs because they get sick with COVID or because they are required to isolate. If this is an issue for you or your neighbours or your school please let us know.

For more information please call: 02 4578 4190

Or email: manager@womenscottage.org.au

Financial Hardship Support Provided in 2021 to 2022

In addition to funded programs, The Women's Cottage provides a range of support to clients in financial hardship. This includes food packs, personal care items, nappies and baby needs and food and petrol vouchers. Assistance to buy medical supplies and fill scripts is also provided. These services are funded by community donations and The Women's Cottage own funds. For women escaping domestic violence support for short term crisis accommodation, moving and relocation costs are made possible from the Gabrielle Fund. This fund was set up in honour of a local woman who lost her life to domestic violence and is funded by community donations. Christmas hampers and toys are also provided each year.

250+ x Food Hampers

40+ x Christmas food and toy hampers

General Needs:

\$1675 for general needs (toiletries, scripts, etc)

\$4100 in food vouchers

\$3200 in fuel vouchers

Domestic Violence Specific Support (Gabrielle Fund):

\$1929 for crisis accommodation, transport, security, and other needs

\$680 in food vouchers

\$350 in fuel vouchers



This assistance to clients in need was only made possible by the ongoing generous donations from our community and business supporters.

You are named on our Supporters page, and we thank you all!

An additional 175 client families were also assisted from COVID-19 Regional Partnership Grant see previous page for full details.

Women's Safety & Selfcare Packs



Developing Resilient Communities Project Small Grants Part of the LCSA Trauma-Informed Community Development Training Program.

The Women's Cottage received \$5000 from LCSA to put together 100 safety and well-being packs for women after the March 2022 floods in recognition that domestic violence and other safety issues increase during and after natural disasters. Each pack included toiletries and self-care supplies, a voucher for a local chemist and information on how to help family or friends (or yourself) around domestic violence and safety issues. All packs distributed by July 2022.

We also partnered with Hawkesbury City Council Community HUBS to provide community information sessions aimed at identifying and supporting women who may be unsafe. The community information sessions are due to take place between Oct – Dec 2022.



Women's Safety and Self Care Packs

For Women of the Hawkesbury after the Floods

Prepared for you by The Women's Cottage in Richmond this pack offers you:

- .A range of self-care and pamper products
- .A \$30 voucher for use in local Chemist
- .Support Options for Safety Issues
- .Available Support Services



COMMUNITY TRAINING AND INFORMATION

FOR WOMEN COMMUNITY LEADERS WHO SUPPORT OTHERS:

The sessions will provide information on safety risks for women that can increase during times of natural disaster and how best to support someone you are concerned for.

To enquire or book in talk to your Community HUB worker.

Available from Community HUBS or by calling
02 4578 4190 or 4560 4444



BUPA Community Grants Group Work



Bupa Foundation Community Grants Program invites BUPA staff to identify, nominate and support the work of eligible community organisations who positively influence the health and wellbeing of local communities.



Wrapped in Angels Blanket Group

For women of all ages – no sewing experience needed



In this 10-week group you will make your own unique blanket that symbolises your strength, survival, resilience and future hopes and dreams. You'll get lots of individual support and you don't need any previous sewing skills or confidence to take part.

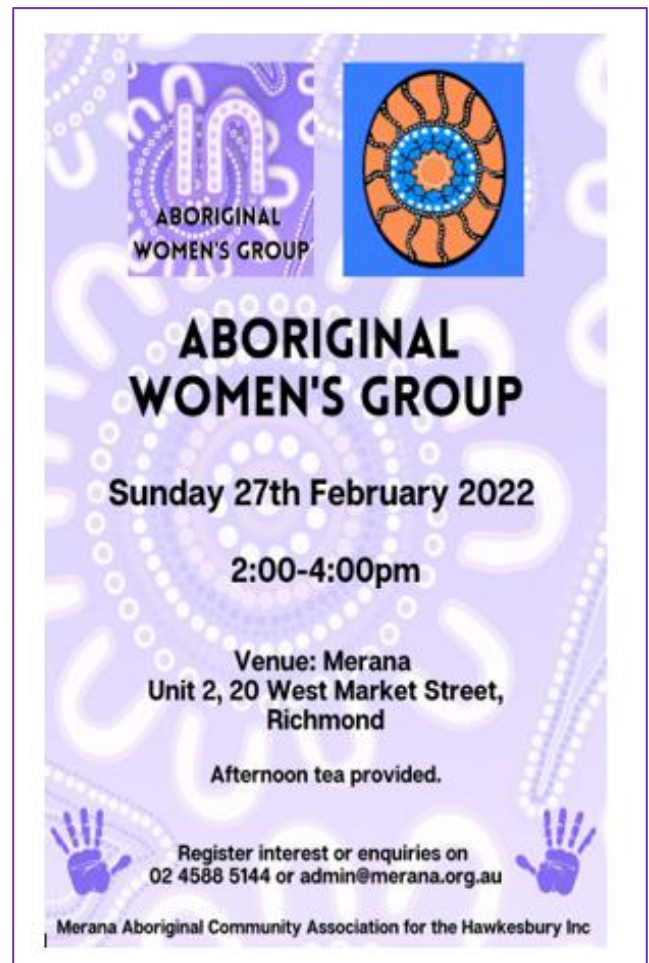
Free Childcare & Refreshments Provided

The Women's Cottage was approached by a BUPA team member in October 2021 and invited to make submission for a grant from the Bupa Foundation Community Grants Program to benefit local women. We applied for and were successful in receiving \$10,000 to run 2 x 10 week Wrapped in Angels group programs including childcare. This group developed by Cara House, provides opportunities for healing and support for women living with the impacts of trauma. After an initial delay due to COVID, the first group has now been completed with the second group starting in October 2022.

Supporting Local Aboriginal Women Group

The Women's Cottage supported Merana Aboriginal Community Corporation with \$2,000 funding towards the costs of running their Aboriginal Women's Group. Merana was able to get face to face groups happening at a time when The Women's Cottage group program was still online. Supporting this group program was seen as an important contribution to Merana and local Aboriginal Women.

These funds assisted Merana to bring in special programs such as art workshops and helped pay for materials and other group needs.

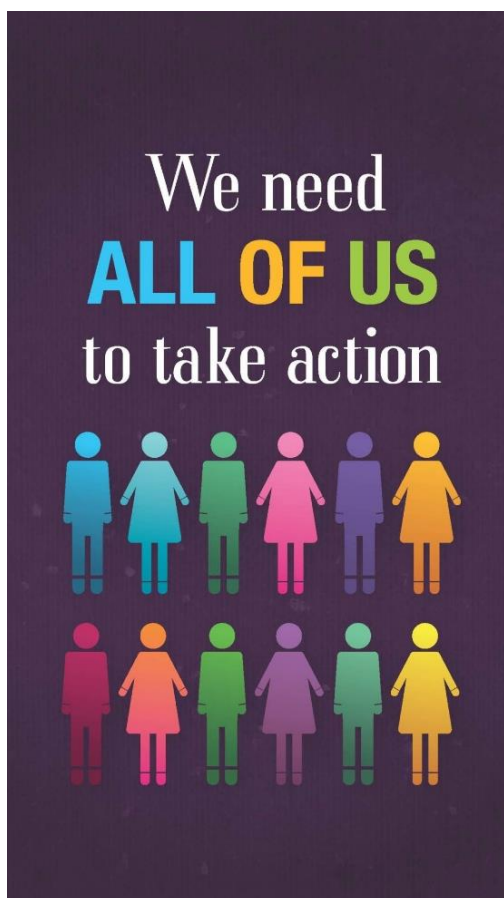


MONDAY	TUESDAY	WEDNESDAY	THURSDAY	FRIDAY	SATURDAY	SUNDAY
APRIL 2022				1 Merana Burus Training 6.30-7.30pm PCYC	2	3 Picnic Day at Merana 10am-1pm The Grant Christian Aboriginal Mens Group 10am (supporting Merana Picnic Day)
4	5 Community Outreach Day at Merana 11am-1pm All Welcome	6 PLAYGROUP 9.30-11AM AFTER SCHOOL PROGRAM 3.30-5PM	7 Dance Group 15-25yrs All Welcome 4.30-5.30pm	8 Merana Burus Training 6.30-7.30pm PCYC	9	10 Merana Aboriginal Women's Group 2-4pm Art with Leanne
11	12	13 Koori Netball	14	15	16	17



The Women's Cottage gratefully acknowledges Merana for all the work they do to support and enrich local Aboriginal community and values the opportunity to support their work and events whenever possible.

Hawkesbury Action Network Against Domestic Violence



The Women's Cottage, via the TEI funded Anti-Violence Project, convenes, and supports the Hawkesbury Action Network Against Domestic Violence (HANADV).

HANADV is a network that acts against Domestic and Family Violence in our community to raise awareness and reduce the incidence of Domestic and Family Violence in the Hawkesbury. HANADV is made up of workers who understand the issues surrounding domestic violence and violence against women and children.

HANADV members work in agencies which provide support for women and children experiencing domestic violence or working to escape from the effects previous violence has had on their lives.

In 2021 – 2022 HANADV met 7 times with a total participation of 72 workers

Activities and initiatives include:

- Partnering with Hawkesbury City Council in the planning and implementation of the Family and Domestic Violence Action Plan
- Stop DV Day
- 16 Days of Activism for Elimination of violence against women & children - Nov/Dec
- Hawkesbury Show
- Day Against Sexual Assault August
- Reclaim the Night - October
- NAIDOC Week - July
- Harmony Day - March
- IDHAOBIT - May
- White Ribbon (supporting Hawkesbury events)
- Love Bites programs in schools



COVID Domestic Violence Casework Outcomes February to December 2021

COVID-19 Domestic and Family Violence Grant funding was released by the NSW Government to address increased experiences of domestic violence and sexual assault during the pandemic. The Women's Cottage received \$150k of funding to run an 'Intensive Domestic Violence Support Project' for 12 months (Feb – Dec 2021). The following report details the outcomes for the full year of project operation.

The grant was split into two (2) different uses. The bulk of the funds were allocated toward casework services for women impacted by domestic / family violence. This has been a significant area of unmet need that has been increasing dramatically since the 2019 bushfires, since which time the proportion of clients impacted by DFV has continued to rise. This increase in need has been continually pushed up with the multiple floods and COVID.

The Hawkesbury Intensive Domestic Violence Support for Women Project includes Case Work support for women living, working, or studying in the Hawkesbury who are experiencing gendered violence or currently living in unsafe situations. This position was funded for 3 days per week.

In addition to casework services, the COVID DV funding was also used to increase standard service open hours at The Women's Cottage to improve overall access for women needing help. This increased open hours during the week by 1 hour per day and allowed the service to open on Saturday mornings.

Overall Outcomes:



Client Demographics and Outcomes:



We ask clients: What Stands Out Most for You?

(a sample of representative responses included)

"You helped me have more confidence to feel I am doing the right thing."

"I have hopes for the future"

"I see a future home that is safe"

Client Feedback

Court Support

"Thank you!! You were so professional on Wednesday; you did an exceptional job well done! You're so calm and patient. Thank you very, very much I wouldn't have done it without you and your help"

Advocacy for DV recognition and Child Safety

"I've been coming here since January and working with Sam. Sam has gone above and beyond for me and my kids and I wouldn't functioning as without Sam or The Cottage."

Support to navigate the process and pressures of family law

"Thank you for your help. Really felt warm in my heart."

85% Increased Connection to Other Services

80% Increased Community Connection / Sense of Belonging

90% Increased Confidence

85% Increased Trust

85% Increased Knowledge and Skills

70% Increased Sense of Wellbeing / Happiness

90% Increased Feeling of Safety

Client Outcomes

Valuing Women's Voices, Building Safety Together

100% of clients felt listened to and understood

100% of clients found their sessions helpful, relevant, and important to their needs

100% of clients felt the session was enjoyable, safe, and respectful

100% of clients felt well supported with difficult emotions

CASE STUDY

Elena is an artistic musician, moved by classical music and her love of science to live a life free from domestic violence. Elena is in her early 20's and has been in a relationship with her partner for 2 years, they began dating in a time when Elena's physical health was poor, and she was in and out of hospital. Earlier this year Elena and her partner moved into a rental unit together and shortly after her partners controlling behaviour and psychological abuse increased. He controlled how Elena dressed, what makeup she wore, who she was allowed to see, how long she was able to be out of the unit for and eventually coerced her into leaving university. Elena reported the abuse to local Police and an ADVO was put in place; however, her partner coerced her into retracting her statement and only mandatory orders were able to be put in place by Police.

Elena reached out to Police in November for support to leave her partner after his violence increased when he stopped going into work due to the COVID lockdown. His behaviours included punching walls and furniture, yelling/spitting verbal abuse at Elena and barricading her in the home. He would set the external door handles up with an elaborate trap when he went out, so he would know if she had gone out or anyone had come over. He prohibited her from getting a COVID-19 vaccination as a method of reducing her movements post-lockdown. The local DVLO's made a referral to the DFV Case Worker and with the support of the client's family and a detailed excuse, she was able to come in for a face-to-face. Together I discussed her housing options should she choose to leave the relationship, including a refuge, family, and medium-term financial support for a rental property of her own. We made safety plans for when she leaves the relationship/home including reporting to Police, financial assistance through Victims Services NSW, ensuring ongoing access to safe technology so she can continue to work and a safety plan for her cat. Elena disclosed that she had secretly re-applied for university and been accepted to start in late February, so this was her timeline to work towards safety and independence. We booked a follow up session for the next week.

Elena arrived at the next session with her cat and a few belongings, having left her violent partner that day, after he went to work. We were able to access financial assistance through the Gabrielle fund at The Women's Cottage for a safe hotel room for the night for Elena, then she was being driven to stay with family a few hours away.

Together we completed the necessary documents for housing and financial assistance so that I could provide case work support by distance and via email. Elena changed her mobile number and made a plan to report to the DVLO later that week. A new provisional order has been made for increased safety and no contact.

Elena's safety planning and support will continue to unfold over the coming months, when she will have more limited support from the WAVE Support Workers at The Women's Cottage.

All names changed



COVID-19 Domestic and Family Violence Caseworker Report

For many people, 2021 was the year that the COVID-19 pandemic continued to climb, but for me it was the year that the pandemic of domestic violence, family violence and sexual assault took on a dark new form. For women and children experiencing domestic violence, there was little reprieve in their own home. No longer did their abusive partner or parent go to work, no longer did they as a survivor go to work or school to have a glimpse at peace. Life became a closed door, for months. I have worked with women who were prohibited from leaving their home, by their abusive partner, to have a COVID-19 vaccination as a way of further restricting her social movements post-lockdown. For those people who are privileged enough to have never experienced domestic violence, family violence or sexual assault, you got but a whisper of what it feels like to have your every movement controlled and monitored, to face punishment for leaving your own home, to live with anxiety and fear about the safety and wellbeing of yourself or your family.

As the sunlight broke through the clouds, many women in the Hawkesbury saw an opportunity for freedom and change. The pro-longed State Government enforced lockdown often not only increased tensions in households. It also allowed the abuser excuses to dismiss or minimise their abuse. "It's stress of COVID, it's stress of lockdown, stress of unemployment, stress of home schooling" The DFV Casework program was increasingly busy over the 4-month lockdown, with high numbers of referrals and complex cases becoming increasingly vulnerable or unsafe due to isolation and school closure.

There has been an increase in women recognising the severity of their situation and reaching out for support and/or preparing to leave.

Our plans to run the Reclaiming Life Group in partnership with Windsor Community Health and Colours of the Hawkesbury Workshop in partnership with WDVCS ceased due to lockdown.

Case coordination with the WAVE Support Team was paramount to maintaining prompt quality access to safety and support for women and children impacted by domestic violence in the Hawkesbury. Case coordination has strengthened across the sector with meaningful partnerships (new and continuing) with the DV Linker for Medical General Practitioners, NSW Police Domestic Violence Liaison Officer's, and the Local Coordination Point through Safety Action Meetings. These partnerships have provided an interconnected approach to increasing safety for victim-survivors and addressing community accountability for domestic violence abusers, in particular responding to 'repeat offenders' post separation and/or for women who have been highly isolated during lockdown.

My hope is for a community that has more empathy, kindness, and awareness about the fundamental abuse of human rights that is domestic violence. As well as funding for permanent ongoing specialist DFV Case Worker in the Hawkesbury, acknowledging the ongoing prevalence of domestic violence, family violence and sexual assault in our community.

Samantha Campbell COVID-19 DV Project Caseworker

Domestic Violence Casework Bridging Project January to June 2022

With the COVID-19 Domestic and Family Violence Grant finishing in December 2021 and the demand for DV Casework greater than ever, The Women's Cottage made the decision to fund this project until more secure funding could be sourced. A combination of funds including the remaining PayPal grant, community donations and funding in reserves was used to ensure DV casework could continue.



This ensured existing clients could be provided with continuity of support and new clients could be seen. This bridging funding covered the period from January to June 2022. The Women's Cottage was very lucky to have an existing worker (Melissa Brodie) with much experience to fill this position. Melissa has been a great asset to her clients in this role.

DV Casework Outcomes Jan – June 2022:



DV Casework Bridging Project Worker Report

Earlier this year I stepped into the DV Caseworker role at the cottage, and let me tell you, I had big shoes to fill following on from our last Caseworker, Sam, who is just amazing. Lucky for me, Sam left me thorough and well thought out casework processes to follow on with, so I thank her immensely for laying out the groundwork in this role and for Maria having faith in me to offer me this role. It has been an interesting transition period for me as I still have a few WAVE clients I'm engaged with, so some juggling has had to be done and some challenges addressed from wearing two worker hats. What I particularly enjoy about casework is the continuity in service provision and being able to walk the extra journey with women experiencing domestic violence. I've been able to attend outreach appointments with them and attend court matters with them which really solidifies the connection with clients and increased support able to be offered, along with this also comes increased skill knowledge. The extra capacity to advocate for women has also been great knowing that I will see these efforts from the client, and I till the end of our casework relationship. I've still got a lot of things to learn in this role as it is a completely different way of working from WAVE and at times, I feel like I'm still finding my feet in it, but I am incredibly grateful for this opportunity for professional growth and the trust our clients place in us on their journeys.

Melissa Brodie DV Caseworker

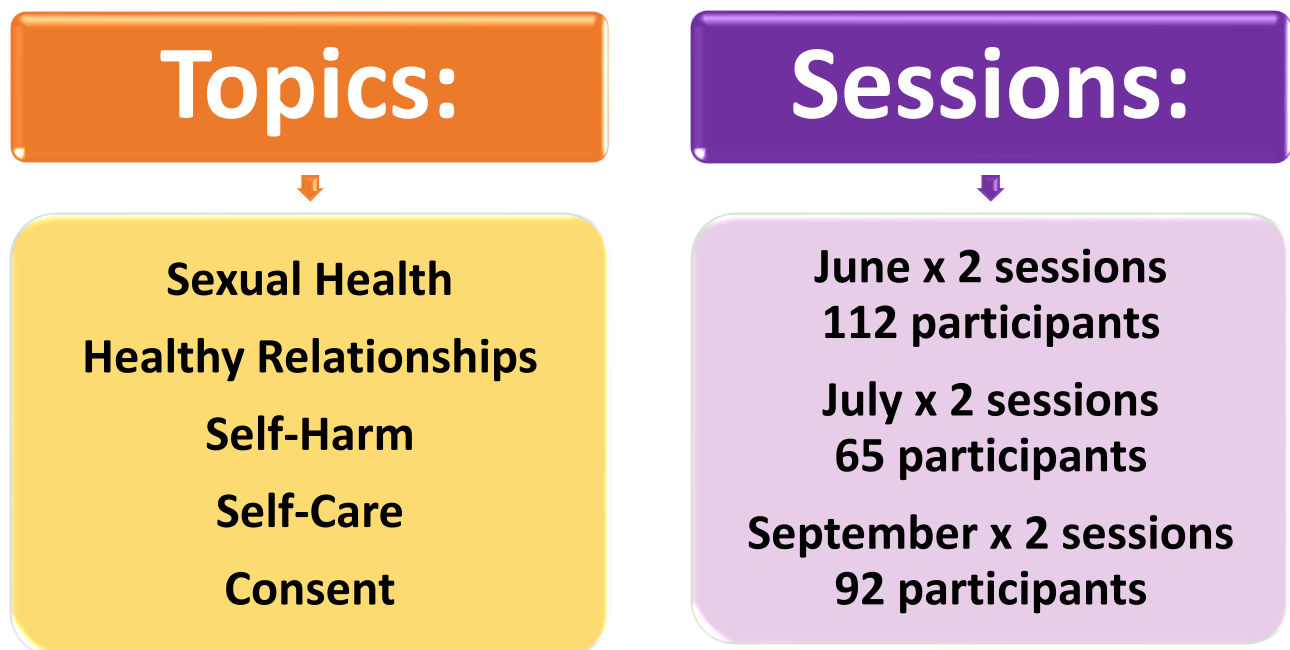
In May 2022, The Women's Cottage received word from the NSW Office of Responsible Gambling that they were seeking to expand their support to cover domestic violence issues as well as expanding gambling awareness in the Hawkesbury. These negotiations led to the successful tender for 2 years funding to continue the DV Casework Project which will formally start in the 2022 / 2023 year.

Young Women's Health & Wellbeing Program

The Women's Cottage worked in partnership with Hawkesbury Community Outreach Service (HCOS) and Richmond High School to deliver a health and wellbeing program to young women in years 10 – 12 in 2022.

The need for the program grew from a one-off session provided at Richmond High School by Sam Campbell as part of the community engagement initiatives of the DV Casework Project. As part of this session, teachers at the school highlighted several areas where they felt female students would benefit from extra support. The development and delivery of a series of sessions was taken up by Mel Olsen in her role as Anti-violence worker at The Women's Cottage and Sonya Parker from HCOS. The young women were also consulted about issues important to them and this feedback informed the final look program. These sessions have continued into the second half of the 2022 year.

A Healthy Relationships brochure was also produced as part of this project that is now available for students at Richmond and other local high schools.



Art Therapy Groups Online



HAS COVID TAKEN IT'S TOLL?

EXPLORE YOUR WORLD THROUGH ART

EMOTIONAL SUPPORT GROUP
NO EXPERIENCE WITH ART OR
MAKING THINGS NEEDED

STARTING ONLINE 15TH OF
MARCH & RUNNING FOR 4
WEEKS

10:00 AM TO 12:00 PM FOR
MORE INFORMATION AND
TO BOOK A SPOT PLEASE
CALL 02 4578 4190

All art materials supplied

As part of the events funded under TEI, the Art Therapy Groups in 2021 – 2022 were provided online.

As one of the first online groups ever provided by The Women's Cottage, this was a learning curve for everyone (workers and clients alike). Although participation was lower than previously seen for face-to-face groups, it was well received by all involved.

Extra work was required to get art packs and materials to participants before the start of the group and to make sure women had access to / confidence in using the technology needed to participate.

Each participant was also contacted after and/or between sessions to check on how they were going and to trouble shoot any IT issues.

A total of 8 online sessions run in 2021 – 2022 with a total of 24 participants



External Groups 2021 - 2022

The Women's Cottage supports groups that are independently run in the community. This support includes contact point for new members, promotion, finance record keeping and accounts if needed, gathering point for outings, and venue if needed. etc. The two (2) groups currently supported are The Jacaranda Group and BLUSH.



The Jacaranda Group, a social networking and activity group for women 50 years plus. Activities include bus trips, speakers, fun educational activities. *"What makes the*

Jacaranda Group special is the non-judgmental respect we show to each other, getting to know local women, making new friendships and being able to share our ideas, talents, life milestones and of course the fun and laughter." Group Member



The BLUSH group provides a safe space for same sex attracted women to meet regularly to share stories, laughs, friendship, and lives. BLUSH is a diverse and welcoming social / support group, with members from a broad cross section of the community. *"Now COVID restrictions are lifted BLUSH meets on the last Friday of each month at various eating establishments around the Hawkesbury. We are a small but committed group of friends who enjoy each other's company and welcome new members who may be interested in joining us."*

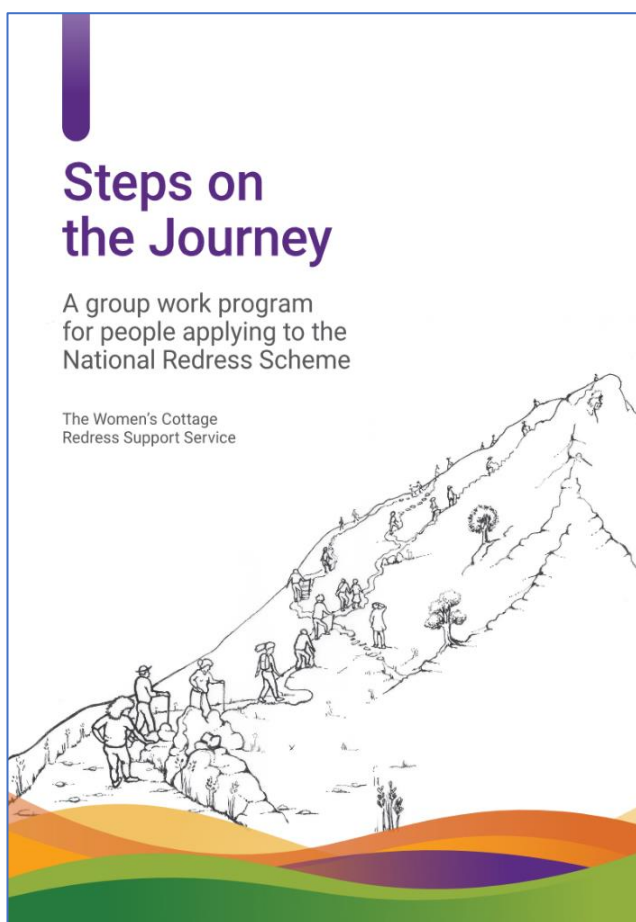
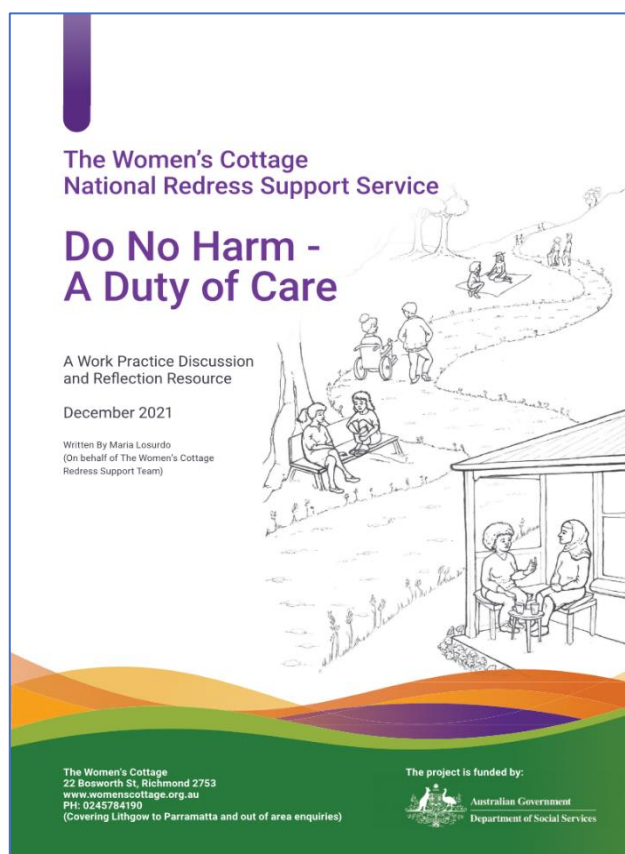
Rolling COVID lockdowns and restrictions meant that very few face-to-face meetings or events could take place in 2021 - 2022. However, both groups provided a much-needed point of contact for isolated women. Group organisers put effort into keeping in touch with members even though they could not meet and supported each other via phone trees, online meetings and through written letters and communications.

For more information about either group please call us on 02 4578 4190

National Redress Pilot Project Initiatives 2021 - 2022

Do No Harm – Duty of Care: Is a discussion paper, exploring the complexities involved in making an application to the Redress Scheme. Giving specific attention to the potential for psychological distress or injury for clients going through the Redress application process, and responsibilities of workers to mitigate these issues in support of clients.

‘Steps on the Journey’: is a group program resource that was developed by our team to support clients at the different stages of the Redress application process.

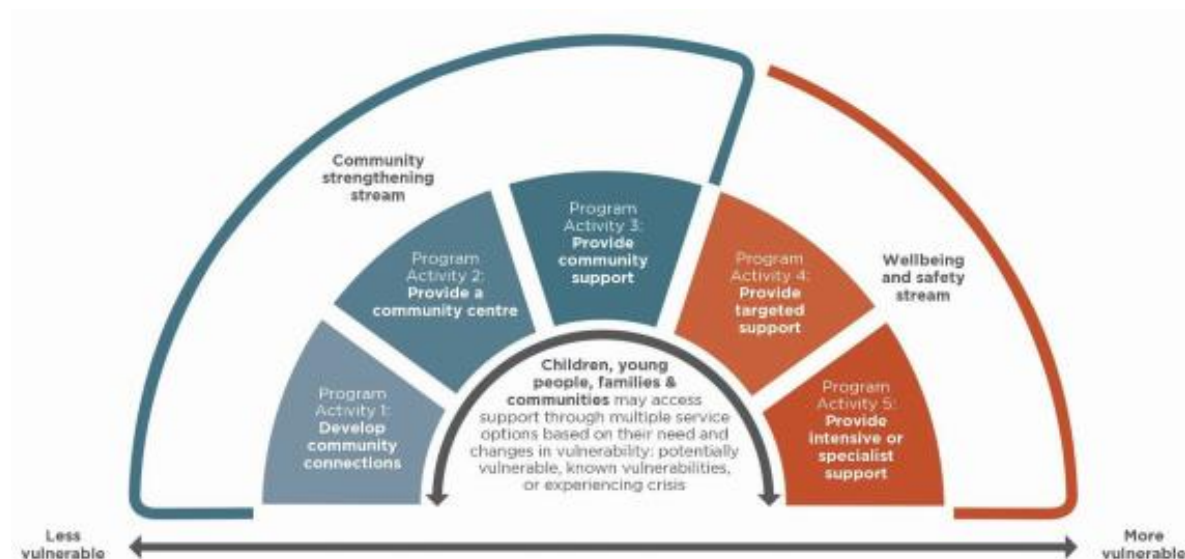


The creation of ‘Steps on the Journey’ resource and group program came out of the experience of the team supporting women victims / survivors through the redress process. It was observed that while each woman had her own experience, themes also emerged. For example: similar questions, fears, hopes, and barriers were faced by a significant proportion of clients. The group program consists of 4 separate modules, with four sessions per module. Each session is between 45 minutes and 1.5 hours.

Both resources will be shared with all 50+ National Redress Support Services across Australia and cross service practice discussions and development will continue.

Targeted Early Intervention Project Outcomes 2021 – 2022

The Targeted Early Intervention (TEI) Program is the funding program for all services funded by the Department of Communities & Justice (DCJ). TEI replaces the former EIPP Child, Youth and Family program. The TEI program is aimed at children, young people, families, and communities within NSW who are experiencing or at risk of vulnerability.



The TEI program covers a range of activities from community development through to responding to high risk. The Women's Cottage is funded to provide services across all TEI program activity levels 1 – 5.

TEI Programs at The Women's Cottage:

WAVE (Women's Advocacy, Violence, Emergency) assistance program covers all requests for assistance received by The Women's Cottage.

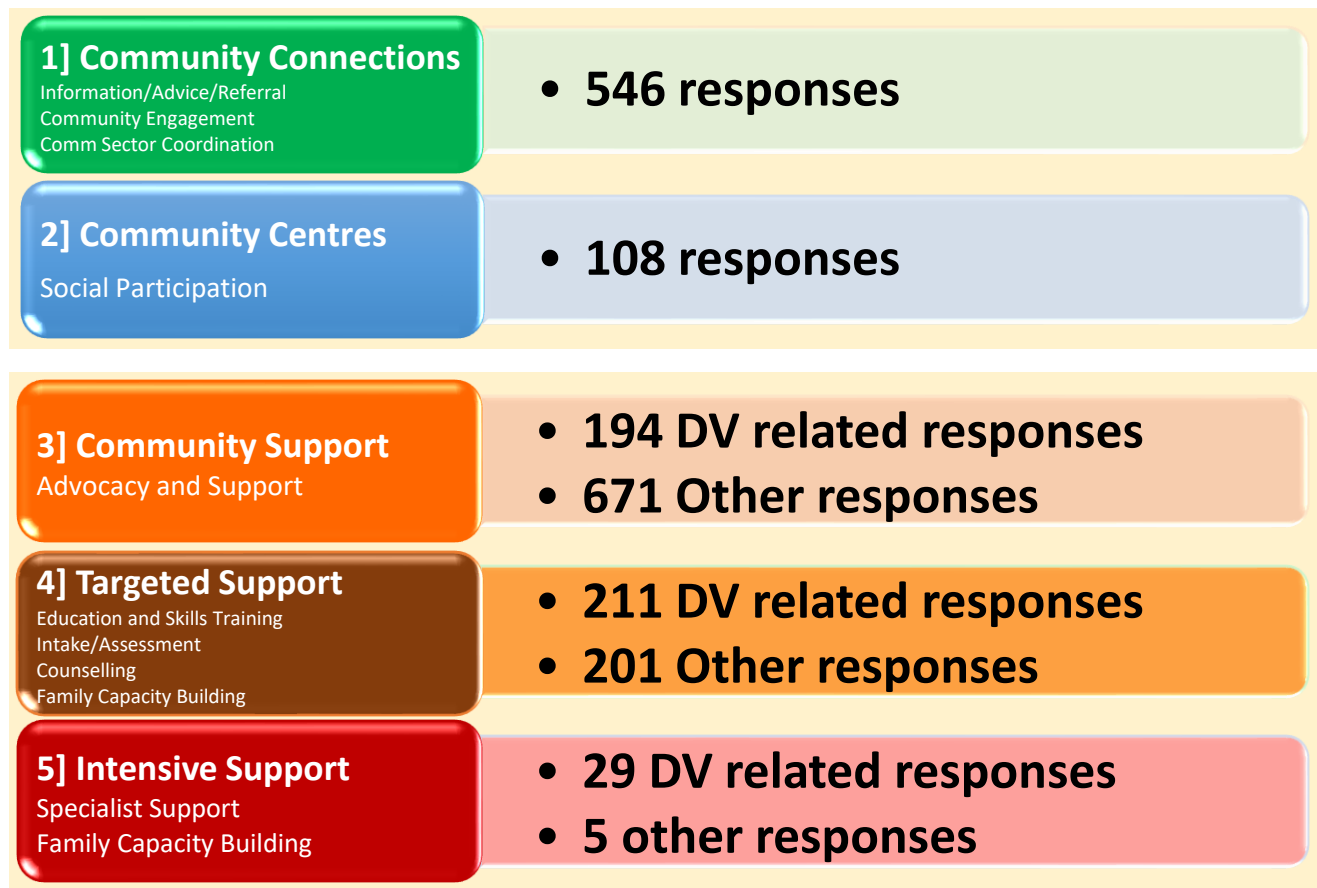
In 2021 – 2022 WAVE workers provided: Approx 2000 responses, to over 1200 clients (800 new clients) in families with over 1300 children. Over 33% of requests to WAVE (TEI 3 – 5) related to women impacted by domestic violence.

Anti-Violence Project provides group work programs, community events, sector planning support and strengthens and maintains stakeholder relationships to address violence against women and girls. This position also holds responsibility to support and enhance connection with and support to the local Aboriginal Community.

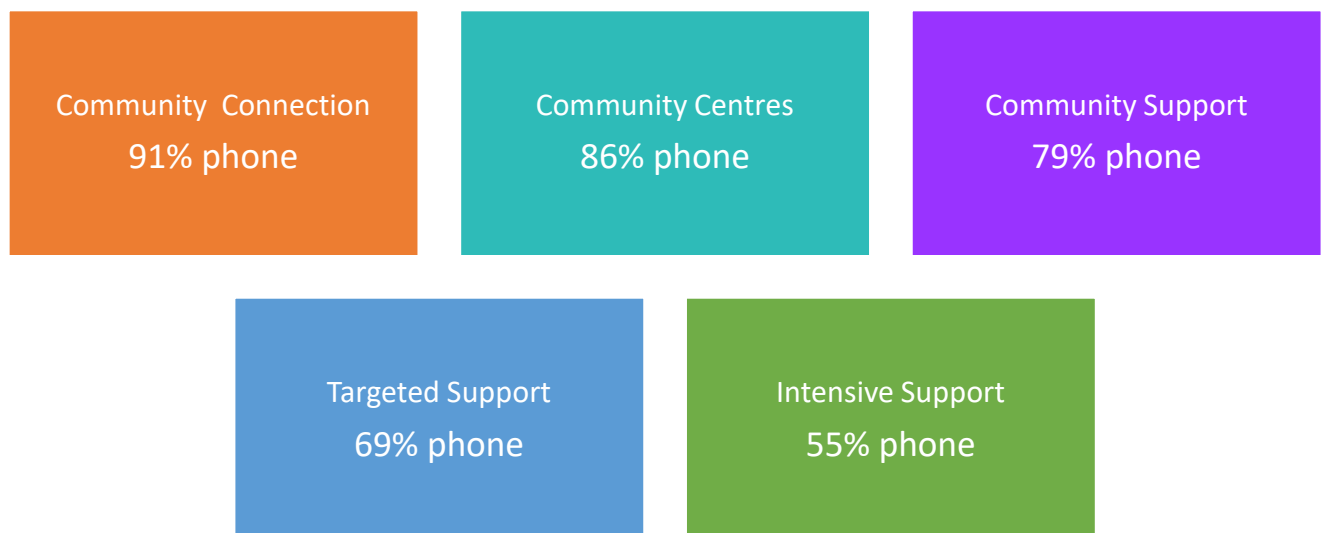
In 2021 – 2022 Anti-Violence Project took the lead on the following events that reached over 500 women:

- Art Therapy Group
- International Women's Day Event
- Reclaim The Night
- 16 Days of Activism
- Women's Social Group
- Hawkesbury Action Network Against Domestic Violence (HANADV)
- Young Women's Health & Wellbeing Program

TEI Program Activity Breakdown 2021 - 2022:

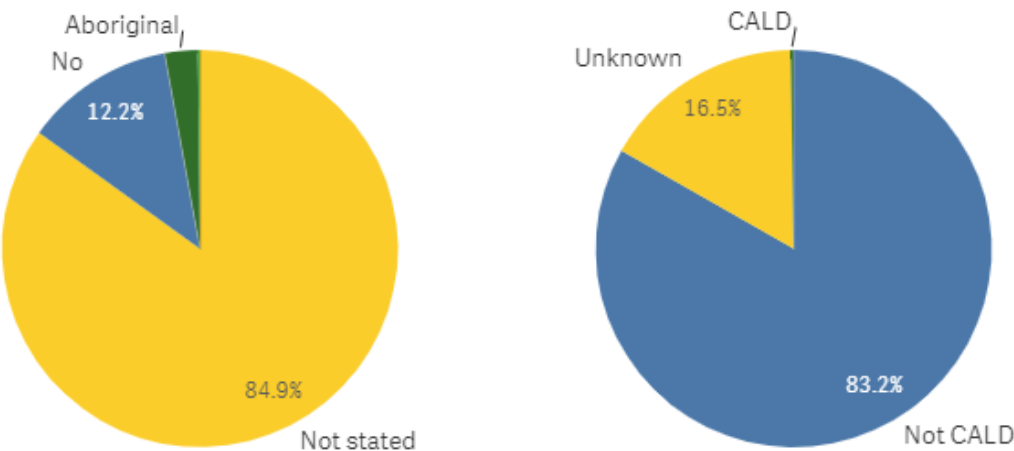


Method of Response – *significant increase in phone access during COVID*

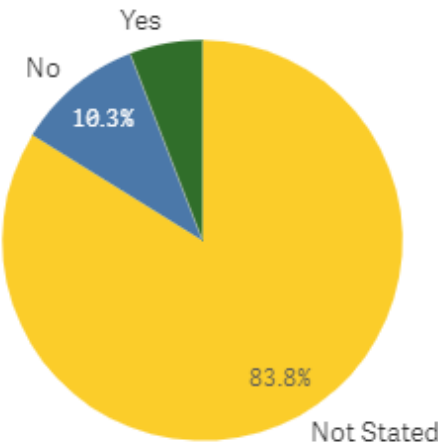


TEI Client Demographics 2020 – 2021

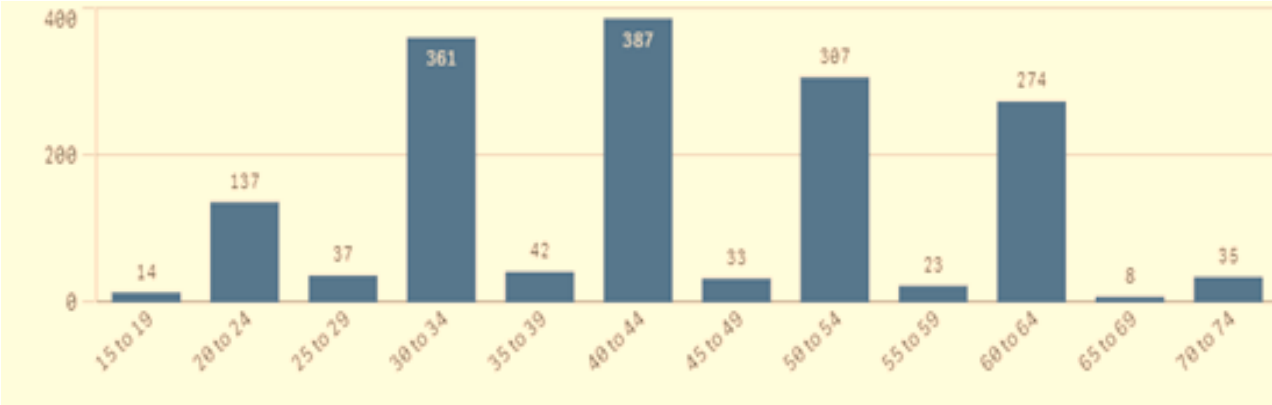
Aboriginal and CALD Clients:



Clients Living with a Disability:



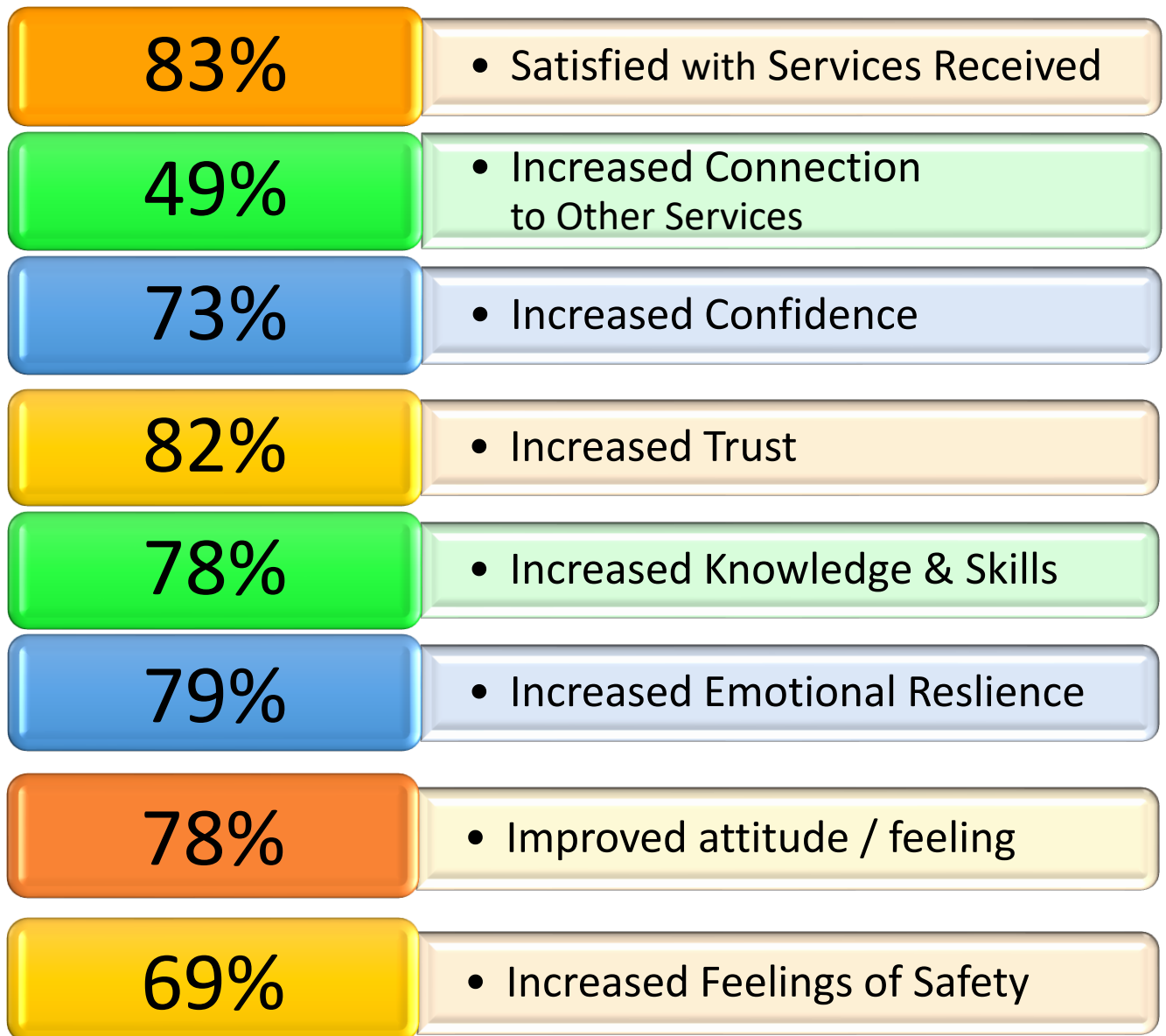
TEI Clients by Age:



What Difference Did We Make?

Our work supported clients to achieve self-determination and positive outcomes. Results are drawn from client feedback, worker observations and casework conversations. (Sample Size - 500 clients).

TEI Client Outcomes 2020 – 2021:

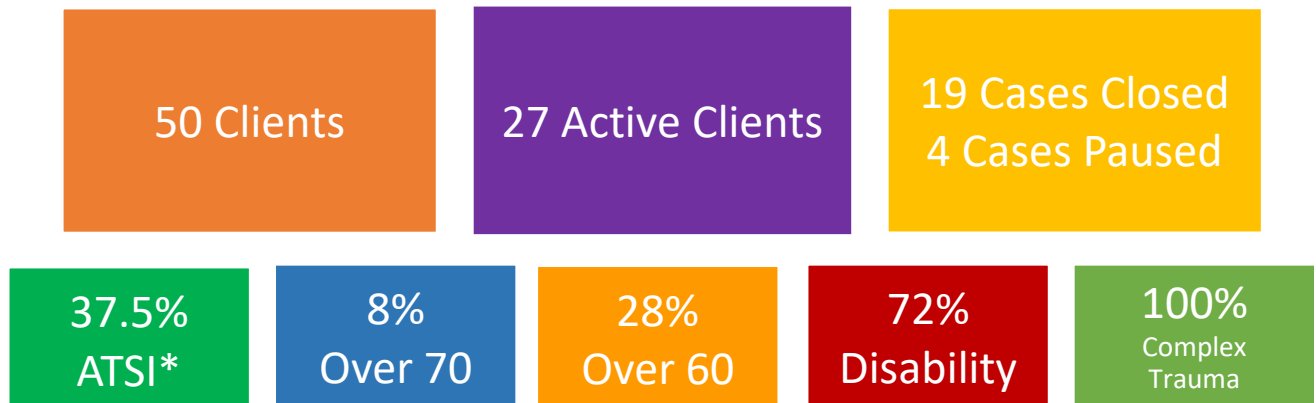


It is important to note that many women we support are in serious ongoing Domestic Violence where they remain at risk and/or are not safe.

National Redress Support Project Outcomes 2021 - 2022

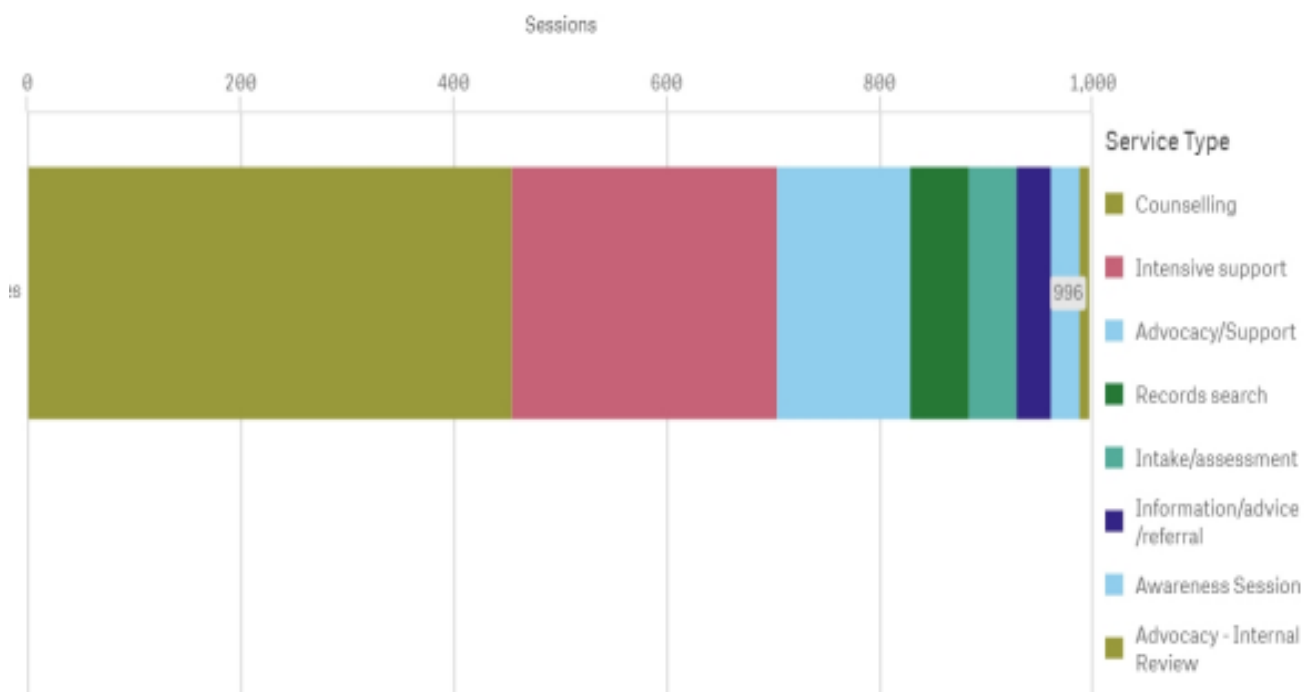
The National Redress Support Project is funded by the Federal Department of Social Services. The project provides free support to women who are applying or considering applying to the National Redress Support Scheme which was established for people who experienced sexual assault in Institutions as children.

Clients Supported – Redress Support Project:



* ATSI – Aboriginal and Torres Strait Islander

1000 Occasions of Service:



Client Outcomes – Redress Support Project:

Client Outcomes are identified through practitioner observations and client reports.

68% of clients reported a reduction in stress / distress

73% of clients reported increased strategies for managing difficult emotions

77% of clients were supported to learn new self-regulation strategies and skills

77% of clients increased their self-regulation capacity, skills, and confidence

77% of clients reported feeling satisfied with the services they received

At the end of each session, we ask clients how they felt about their experience.



We also ask, ‘What stood out the most for you today?’

A sample of responses....

“Even though things are so hard, I feel better with your support”

“You were so prompt, and it is all clear”

“I trust what you do”

“You taught me about breathing and calming down”

“Having someone who actually hears what I say, and I know you do”

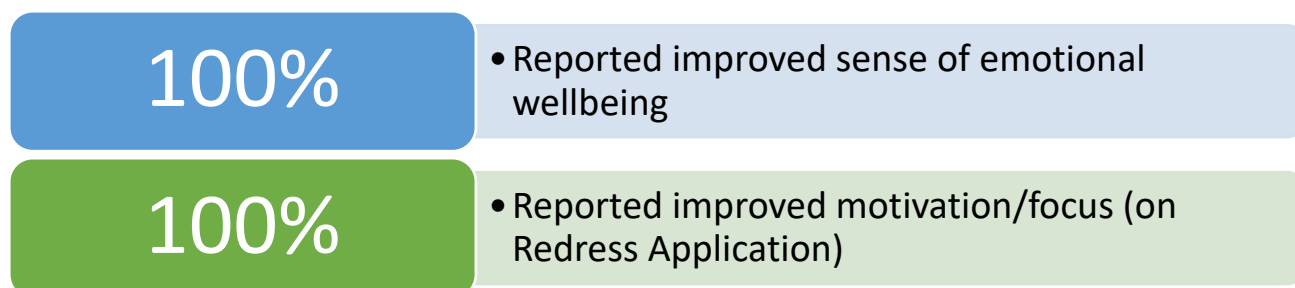
“I was scared to call, but it was ok”

***“When you can relate (the abuse) to someone who actually listens,
there is a little bit of relief inside”***

National Redress Client Well-Being Project Report

Client Well Being Project: In response to the high degree of trauma for women supported by the National Redress Support Project, a pilot was set up to assist women with activities to calm and soothe them. Activities were tailored to each participants needs, and offered things such as massage, supporting hobbies, arts and craft materials, and outdoor interests. The project was trialed to support clients with an interest or self-care strategy in addition to standard support offered. This was aimed at supporting the client's overall wellbeing; to increase capacity and skills for their window of tolerance and self-regulation; and to increased capacity to work on their application. Five (5) clients participated in the pilot.

Overall Outcomes:



Increased Protective Factors:



Decreased Risk Factors:



Feedback/Comments:

Craft Supplies – “Knitting Supplies for something to do in lockdown and to keep me steady.”

Easter Care pack - “I’m so grateful, so appreciative of the Coles gift card.”

Christmas relief care package - “Thank you for providing some small presents for my kids from Santa. It took a lot of pressure off me when times are so tight”.

Food Support - “Thank you for buying some groceries as it meant I had some money from my pay to use on Simba my dog for the vet.”

Redress Support Project Worker Report 2021 - 2022

The Redress Support Service at The Women's Cottage is maturing and flourishing. We have learnt an enormous amount over these four years, and continually update our knowledge and our practice through experience, training, and partnerships.

The bulk of our work continues to be supporting women with multiple vulnerabilities to move towards or to make an application to the National Redress Scheme (NRS). As vulnerable members of our community these women are particularly likely to experience severe effects from the crises that we have all lived through these past few years. Many would say that recovery from fires, floods, pandemic has barely started for much of our community, and this is certainly true for many of the women who come to us for assistance.

As time goes on, we are supporting more women from outside our region. We are also seeing more women who have already made an application. Some made the application without assistance from an RSS and are looking to amend their application and others are dealing with the end-stages of the NRS process. Everyone involved is new to the operation of these end-stages, so it's a challenging time/area to work in.

One part of the supportive work we do is group-work, including the Wrapped in Angels group, a trauma-informed resilience focused group which is meant to take 10 weeks. We were running one when lockdown regulations tightened again in 2021, and we are very pleased to say that we finally finished it in 2022. We really want to thank Jennifer Pitty who co-facilitated this group and made herself available to get it finished.



Another part of the supportive work we do is being able to give our clients experiences and items that help them to continue with the application process. These are such things as therapeutic massage, art supplies, fuel vouchers to attend appointments and care packages sent to each one personally. We receive beautiful feedback from these activities.

It is very important that the existence of the NRS is known to anyone who may need it, and we continue to find that surprisingly few people know about it, including professionals who should. As it can take years to get to the point of putting in an application, another important focus of our work is ensuring that the word gets out about the NRS in time for the mid-2027 finish of the scheme.

To this end we do as much community engagement work as we can. Lockdowns have obviously had a big impact on our ability to meet with agency staff across our region, but we continue to reach out online and by phone. We have also taken part in a state-wide consortium of Redress support services aimed at improving knowledge of the NRS in the people-services sector. In June, our redress support service, along with others, made a presentation at Penrith Panthers for workers from Western Sydney. New resources were created in time for this, and we have also been distributing them at every opportunity across our region since then.

Once again, we thank Indigenous artist Tracie Harris for her vibrant painting which is now used to great effect in the document wallets that Angie and Kelly have created. They make it possible to give interested workers an up-to-date information and resource pack.

In addition to the colourful wallets, we have produced another video in our series. This one is a guide to filling out the redress application form and is beautifully put together by Biz Adams who is a pleasure to work with.



Screenshot from new promotional video 'making an application'

A major resource produced this year, with contributions from the Redress team, is a discussion paper written by Maria Losurdo, our manager, entitled 'Do No Harm, A Duty of Care'. It is being distributed to Redress support services nationwide. It is intended to open more discussion on the issues around the responsibility of Redress support services to understand that making an application to the NRS has the potential, even the likelihood of re-traumatising an applicant, and the responsibility of RSS to do what they can to minimise that re-traumatisation. It draws on the concepts of Polyvagal Theory, and what that theory tells us about the possibilities for agency, decision making and clear thinking when in different nervous system 'states' (of reaction).

Building on initial discussion and foundation-laying by the whole team, Sarah and Maria have also developed a group program for people wanting to make an application to the NRS. 'Steps on the Journey' takes participants through each stage of the redress process in a supportive and educative context, where peer support, emotional skills, information, and professional support come together. The Being Group (design and publishing company) have been willing partners in pooling our expertise in trauma-informed care and their expertise in design and publishing. The final result is an attractive product which is clear and usable.

Some of these resources are already available on the Redress page of The Women's Cottage website. We are working on an online version of the 'Steps on the Journey' program and that will also be available on the website.

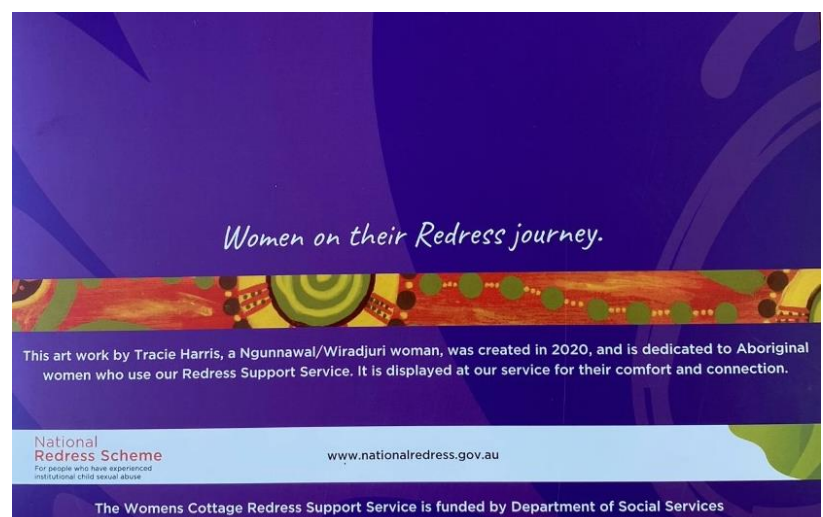
In addition to all these activities we also started a fascinating nine-month training called the Healing Trauma Program. This is 6-8 hours per month of very high-quality online training, with excellent presentations by some of the leading practitioners and researchers in the area, and with a focus on a deep understanding and felt experience of the process of healing trauma.

We continue to attend and have a strong presence at state-wide meetings of Redress support services, both those led by our funders, DSS (Department of Social Services (Commonwealth Govt) and the Community of Practice meetings, led by the service providers. Both these regular meetings now take place online, which is leading to good attendance but is not as satisfying in terms of partnership building and more nuanced discussion. We take every opportunity to advocate strongly for the NRS to continue its aim of being a trauma-informed operation.

The NRS continues to change and develop, and we take part in many surveys, feedbacks, and discussions to inform those changes. The NRS went through a review after its second year and the findings of that review were published in March 2021. A significant recommendation that has been implemented is the introduction of an advance payment for applicants who meet certain criteria (age, Aboriginality, very serious illness). We have also taken part in focus discussion with consultants that will lead, among other things, to a best practice guide for RSS.

We want to thank the Collective for your support and encouragement in these strange times, and to Maria and our colleagues, at The Cottage who, on top of their own heavy workload, continue to direct people to us with grace and efficiency.

*Sarah Dillane, Angie Gleeson,
and Kelly Haines*



New Community Engagement Information Wallets

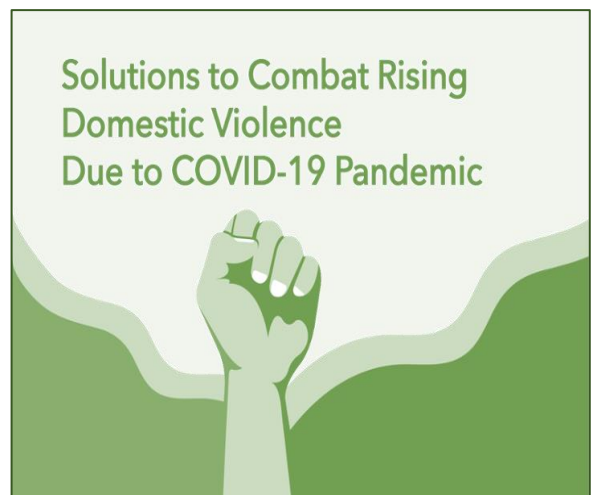
WAVE Worker Report 2021 - 2022

Women's Advocacy Violence Emergency (WAVE) services refer to all services provided to women seeking assistance over the phone or in person at The Women's Cottage. These services are predominantly funded under DCJ and include crisis response, counselling, casework, referral, information, advocacy, and emergency relief. WAVE operated continuously throughout the pandemic. Shifting to phone support where possible, while maintaining face to face crisis work wherever needed.

Another year passed in a blur as WAVE continues to be extremely busy.

Saturday shifts have been of great benefit to women who access our service, those three opening hours are usually booked in advance and allow more working women the opportunity to access our service for support.

It has been another intense year for WAVE. We have seen an increased need across multiple support services offered and with our longer opening hours, we have been able to meet this demand.



Although COVID is still affecting certain aspects of our service delivery, we have adapted and changed practice and procedure throughout changing times to continue to support client needs. We are still offering phone appointments as well as support via email and have found this to be very helpful, especially during crisis periods such as the floods. It was important that we were able to maintain communication to those clients who were isolated or felt they were alone.

As we start to open back up to full capacity, we have been able to incorporate services from other community sectors that we have developed partnerships with. We are now able to offer support from Western Sydney Community Legal Centre as well as Staying Home, Leaving Violence. This has been an exciting step forward and allows our clients a much better experience when trying to navigate the changes they are dealing with.

On top of these added services, I am happy to announce I am now the dedicated Victims Services worker. I assist clients with navigating the application process, whilst keeping on top of the changes within Victims Services. This provides strengthened continuity to service provision to our clients experiencing DFV and supports our other workers in the service to concentrate on other supports needed.

The year continues to throw curve balls at our community, but we will maintain our ability to adapt to be the best support we can be.

Jess Reed WAVE Worker

WAVE Worker Report 2021 - 2022

It's been twelve big months in WAVE, we've had more covid, floods, floods & more floods, all of this has contributed to us being busier than ever!

As with Covid lockdowns, the isolation from floods in the Hawkesbury has contributed to higher rates of domestic violence and we have received many referrals through the Flood Recovery Hubs from workers whose clients have disclosed domestic violence. We've also assisted more women with material aid due to the flood crises.

Some exciting news is the new partnership we have formed with Western Sydney Community Legal Clinic (WSCLC), they now provide an outreach service on a fortnightly basis to our service so women can get free legal family law advice. This has been a valuable addition to our service and has provided continuity of service to our clients.

We also have Jess, our fabulous WAVE worker, assisting and supporting women with the Victims Services applications by appointment on Thursdays, this has been well received by our clients. The benefit of one worker doing these applications is that Jess keeps continually up to date with any Victims Services changes, and it streamlines our service provision to women when there is follow up needed to be done with these processes.

It has been wonderful seeing our groups get up and running again, throughout COVID enquiries about our groups were received daily, it's great to finally see women experiencing social isolation being able to participate in groups in such a safe and supportive environment with our lovely facilitators.

A huge thanks goes out to our Team of dedicated workers and students who have really stretched themselves through some of the toughest times the Cottage and its workers has experienced, thank you all for your wisdom, patience, and perseverance, we've got this and can face anything the future throws our way.

Melissa Brodie WAVE Worker



WAVE Case Study

Kay* was referred by another agency to assist her with domestic violence. Kay informed us she had fled the home with her son and was staying with a friend in the Hawkesbury but needed help in navigating what needed to be done. Kay disclosed she had only recently opened up about the violence she was enduring as her partner had spent years telling herself his anger was her fault and that she always deserved it.

She disclosed physical, sexual, and financial abuse. I provided Kay with a copy of a book called Charmed and Dangerous, which outlines the various forms of abuse and reiterates the fact that she did not deserve any of the abuse, and that the behaviour he displayed was his responsibility, and his alone. Kay also disclosed she had previously tried to leave, but he threatened to call the police and state she had kidnapped their son, as well as the hospital to have her 'admitted as crazy', which caused her to stay.

Kay was also worried about the financial aspects of leaving as she no longer held an income, and her partner had not allowed her to apply for Centrelink. I assisted her with the application process and supplied support for the crisis payment. Kay contacted the police and advised them she had left as well as the hospital and advised them of the violence.

She received support from both agencies. I also assisted Kay with completing a form that allowed her to break from her lease, penalty free, due to domestic violence. We discussed housing and Kay stated she was safe with her friend but would like to find a home within the Hawkesbury to maintain the support she was receiving. We completed a referral to Nurreen as well as completing an EVP to assist her with purchasing furniture she no longer had access to.

Kay stated she wanted to also seek counselling, to help her come to terms with the abuse so we completed a VS application for counselling, which was approved the following day. Kay was then diagnosed with cancer, and surgery was booked within 2 weeks. We linked Kay in with appropriate services that would support her and her son through the process of recovery. Kay has made tremendous progress since leaving her partner, and we continue to support her wherever needed.

*names changed.

Continued increases in client needs due to both system gaps and because of the COVID pandemic:

Increase in the rate and severity of domestic violence.

Increase need for emergency relief, food & material aide.

Increase in the overall mental health issues, stress, and anxiety of clients.

Increase requests for support related to NDIS from women impacted by trauma.

Increase requests for support for clients living with complex mental health issues.

Increase demands on workers and work-related stress

Anti-Violence Worker Report 2021 – 2022

The Anti-violence Project Worker takes a key role in community development and education projects and activities that raise awareness about the effects of violence and to reduce violence against women and children. This position also involves front line work providing group programs, crisis support, offering information, and making appropriate referrals.

Groups / Events / Campaigns 2021 - 2022:

Much of the past year I have continued to work from home due to COVID. With meetings and events often held online. Face to face meetings and groups have slowly started to come back from July 2022. Until the renovation is finished at The Women's Cottage most groups will be run from Hawkesbury Leisure & Learning Centre.

Groups:

- Art Therapy Groups held online
- Women's Social Group held online
- Wrapped in Angels Group Face to Face started in Term 3 2022
this group was very well attended after long periods of COVID isolation!



International Women's Day was marked by a range of online events and recordings on Facebook and our website on the theme of "Break the Bias" A video was made by one of our students (Kate) on the history of IWD and women's rights within the Hawkesbury context.

Reclaim the Night was during COVID lockdown and was instead marked by a series of online events and recordings via Facebook posts and our website.

IDAHOBIT was marked by a "Grease" sing along movie night at Richmond Movies. A well-attended and much enjoyed event, as one of the first in person gatherings after the height of the lockdowns!

NAIDOC was cancelled due to COVID lockdown.

White Ribbon online information session and presentation.

Young Women's Health & Wellbeing Program was delivered in partnership with Sonya Parker from HCOS at Richmond High School. 6 sessions were held between June – Sept 2022, with more to follow. Sessions covered topics such as healthy relationships, sexual health, selfcare and consent. More than 260 young women from years 10, 11 and 12 attended. This initiative also provided much needed additional support for welfare support teachers who reached out to The Women's Cottage in relation to wellbeing issues for female students.

Community Engagement, Participation and Partnerships:

Facilitating, attending, and participating in relevant networks. Develop and sustain partnership with key government and non-government services.

Hawkesbury Action Network Against Domestic Violence - I am convenor of this meeting and due to COVID I have taken up the responsibility of writing minutes after COVID hit. This has allowed meetings to continue via zoom.

Metwest Violence Prevention Network meetings are quarterly but hasn't been meeting due to COVID.

With the on-going social distancing/lockdowns all interagency are being held via zoom/teams. This has made it possible for me to attend other network meetings, including:

- LGBTIQ++ Domestic and Family violence interagency.
- CAVA Interagency Blue Mountains.
- Nepean D.V. Network interagency.

I've also been a part in the following advisory groups / initiatives:

- Safe Places Operations and Leadership Groups
- Aboriginal Work force referral/advisory
- Recognise Respond Refer Steering committee.
- DVNSW 2021-2024 Strategy and Priorities meeting.
- Flood support meetings and Resilience centre - I have put a lot of time and effort into flood recovery reviews and planning with Hawkesbury City Council and Resilience NSW. This included raising awareness of pet safety as part of Lucy's Project work and consideration of domestic violence and pets in future local natural disaster planning.

In March 2021 I was also employed by Lucy's Project to deliver a training package, Animal ready communities and to develop a resource directory providing cross collaboration with the animal community/services. This work is being done in partnership with my role at The Women's Cottage to increase community capacity to support women with pets and livestock who are escaping violence. This work concluded in June 2022 and has evolved into ongoing partnership work between Lucy's Project and The Women's Cottage.

This past year I've felt very inspired by many of my peers as they have met the challenges and difficult times of the past year(s) and continued to support clients and community and be a voice against violence against women and children. The biggest challenge has certainly been the ongoing impacts of COVID and multiple major flooding events. My hope for the coming year is to be back in the office, working together and supporting clients, and that groups will be able to be in person.



Anti-Violence Project Worker Mel Olsen

Student Report 2022

During 2022, I have had the opportunity to complete my final social work placement at The Women's Cottage. Joining the team, I was struck by how welcoming and supportive all the workers are. They have been so open and generous in sharing their wisdom and they have supported me to develop my confidence as I have taken on new responsibilities. I am privileged to work alongside such a committed and skilled group of women.

So far in my placement, I have been involved in group programs, community events, interagency meetings, training courses and a conference. Through this work, I have deepened my understanding of trauma-informed practice, feminist practice, the role of the Cottage and the range of services available to women.

GOAL	TASKS
Develop skills in facilitating group processes and providing trauma-informed support to women in groups	<ul style="list-style-type: none"> • Support facilitation of the Art Therapy group • Support facilitation of the Wrapped in Angels group
Collaborate with individual women to identify goals and implement appropriate supports	<ul style="list-style-type: none"> • Shadow WAVE (crisis response) workers and discuss their practice with them • Provide first stop crisis and/or ongoing support to women who drop in or phone in
Increase my knowledge of relevant social work theories/models and how to apply these in practice	<ul style="list-style-type: none"> • Speak to each worker about their approach to trauma-informed care • Read about, discuss with colleagues, implement and reflect on relevant theories / models including trauma-informed care, crisis intervention, feminism, strengths-based approach
Develop relevant writing skills, including a feminist approach to writing	<ul style="list-style-type: none"> • Read existing case notes • Discuss with colleagues about specific considerations when writing case notes from a feminist perspective • Write case notes after my client interactions and seek feedback

	<ul style="list-style-type: none"> • Complete other documentation as relevant to the women I work with and seek feedback • Contribute to the content and review of the Annual Report
Develop knowledge of local services and referral pathways relevant to clients of the Women's Cottage	<ul style="list-style-type: none"> • Research services women are commonly referred to • Attend HANADV meetings to network with related agencies • Attend relevant events e.g. NAIDOC, Reclaim the Night, Nepean Blue Mountains Family & Domestic Violence Forum
Develop knowledge and skills for respectful, culturally safe practice with Aboriginal and Torres Strait Islander women / communities	<ul style="list-style-type: none"> • Consult with the Aboriginal Worker about best practice when supporting Aboriginal and Torres Strait Islander women / communities • Attend the Hawkesbury NAIDOC event alongside the Aboriginal Worker
Practise self-care during and outside of work hours	<ul style="list-style-type: none"> • Participate in formal supervision and actively seek additional debriefs / supervision as necessary • Collaborate with colleagues to ensure an achievable and balanced workload • Establish a self-care routine outside of work hours including yoga, mindfulness and music

I am now beginning to provide WAVE support and am looking forward to further developing my skills and knowledge in this role.

A highlight of my placement so far has been co-facilitating the Wrapped in Angels group. I have enjoyed building relationships with participants, hearing their stories and witnessing their progress over a period of 10 weeks. I am also proud to be playing a small part in feminist activism by helping to organise the Reclaim the Night march. I look forward to attending this march, which will be a culmination of several months of collaborative planning.

I would like to extend my deepest gratitude to Maria and all the other wonderful workers who have supported me every day on my journey towards becoming an independent worker. I would also like to thank the women I have worked with for trusting me with their stories.

Simone Cooper

Finance Worker Report 2021-2022

Another financially successful year for the Cottage which resulted from the generosity of the community and the funding grants that were obtained throughout the year.

The Overall result for The Women's Cottage for the financial year 2021-2022 is a surplus of \$29,575.

The NSW Department of Communities and Justice funds the TEI projects which include WAVE and Antiviolence programs. The Federal Department of Social Services funds the Redress Scheme Support Project.

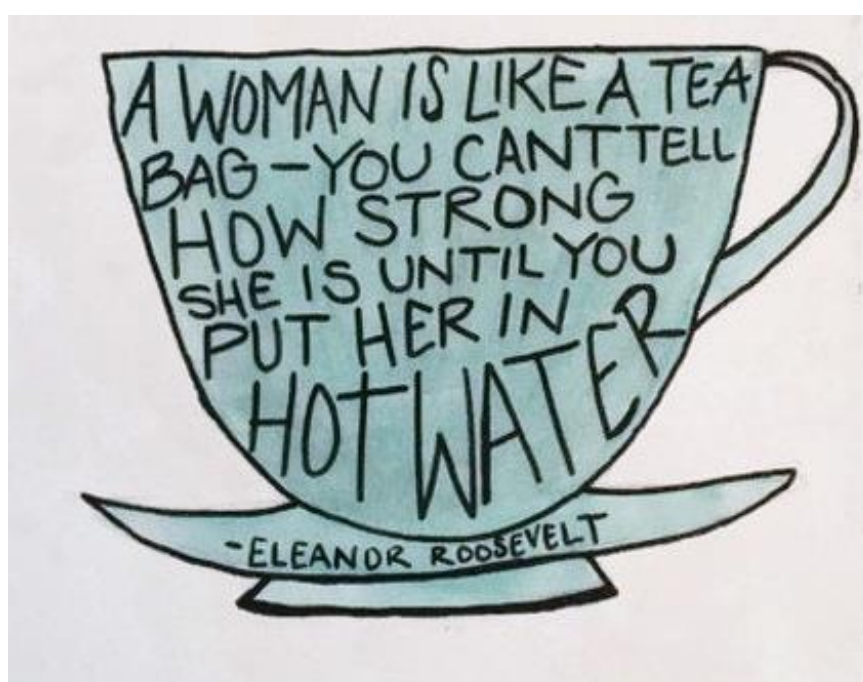
During 2021-2022, the Cottage was fortunate enough to receive the many donations, one off funding and grants which funded extended hours of service provision and material support for clients affected by floods and COVID. We also received wonderful support from the community which has included donations of funds, groceries and back to school items.

In the past financial year staffing costs have increased primarily due to the additional staff and extra working hours funded by additional grants and donations. These additional funds have allowed The Cottage to extend the opening hours to better meet the demand for services and help our clients. Staffing costs continue to be the major expense of the organization as is expected in a service industry.

The Women's Cottage is in a financially secure position with adequate funds in the bank to meet the expenses of the organisation as and when they fall due. The full story of our year can be found in the financial reports at the back of this book.

The Women's Cottage is a remarkable service, and it is a privilege to work with this team of wonderful, compassionate, and supportive women.

Meg Keith, Finance Administrator



Joseph Banks & Co.
CHARTERED ACCOUNTANTS

AUDIT CERTIFICATE

**Standard full Audit Certificate by a Qualified Accountant in respect of
Community Funded Organisations.**

I, Sue Ann Paine, of Shop 9, 100 George Street, Windsor NSW 2756, being a qualified accountant within the meaning of the Community Funding Program, do hereby certify that I have examined the books and financial records of **Hawkesbury Area Women and Kids Services Collective Inc.**

In my opinion the financial statements present fairly the financial position of the organization and the results of its operations for the year ended 30 June 2022 in accordance with the Australian Accounting Standards.

I have satisfied myself that:

- a) Establishment of all reserves/provisions is justified and represents funds set aside for Long Service Leave, Annual Leave and Relief Workers and Maternity Leave.
- b) Payments to associated and/or affiliated bodies have been adequately disclosed.

Signed 
Sue Ann Paine, FIPA

Date 31 August, 2022

Qualification: Fellow, Institute of Public Accountants
No: 104947

**INDEPENDENT AUDITOR'S REPORT TO THE MEMBERS OF
HAWKESBURY AREA WOMEN AND KIDS SERVICES COLLECTIVE INC.**

Report on the Financial Report

I have audited the accompanying financial report of Hawkesbury Area Women & Kids Services collective Inc., being a special purpose financial report, which comprises the Statement by Members of the Committee, the Statement of Comprehensive Income, the Statement of Financial Position, the Statement of Accounting Policies and explanatory notes for the financial year ended 30 June 2022.

Committee's Responsibility for the Financial Report

The Committee of The Association is responsible for the preparation and fair presentation of the financial report in accordance with Australian Accounting Standards (including Australian Accounting Interpretations). The Committee is responsible for such internal control as management determines is necessary to enable the preparation of the financial report that is free from material misstatement, whether due to fraud or error, by selecting and applying appropriate accounting policies, as stated in Note 1, and making accounting estimates that are reasonable in the circumstances.

Auditor's Responsibility

My responsibility is to express an opinion on the financial report based on my audit. I conducted my audit in accordance with Australian Auditing Standards. Those Standards require that we comply with relevant ethical requirements relating to audit engagements and plan and perform the audit to obtain reasonable assurance whether the financial report is free from material misstatement.

An audit involves performing procedures to obtain audit evidence about the amounts and disclosures in the financial report. The procedures selected depend on the

auditor's judgement, including the assessment of the risks of material misstatement of the financial report, whether due to fraud or error. In making those risk assessments, the auditor considers internal control relevant to the entity's preparation and fair presentation of the financial report in order to design audit procedures that are appropriate in the circumstances, but not for the purpose of expressing an opinion on the effectiveness of the entity's internal control. An audit also includes evaluating the appropriateness of accounting policies used and the reasonableness of accounting estimates made by the committee, as well as evaluating the overall presentation of the financial report.

We believe that the audit evidence we have obtained is sufficient and appropriate to provide a basis for our audit opinion.

Independence

In conducting my audit, I have complied with the independence requirements of the Australian professional ethical pronouncements.

Auditor's Opinion

In my opinion:

- i) The financial report gives a true and fair view of the financial position of Hawkesbury Area Women & Kids Services Collective Inc. as at 30 June 2022, and of its performance and its cash flows for the year ended in accordance with the Australian Accounting Standards; and
- ii) the financial report also complies with the accounting policies described in Note 1 to the financial statements.

Signed on: 31 August, 2022



Sue Ann Paine, FIPA
Institute of Public Accountants

HAWKESBURY AREA WOMEN & KIDS COLLECTIVE INC.

Notes to and forming part of the accounts For the year ended 30 June 2022

Note 1. Statement of Significant Accounting Policies

The financial report is a general purpose financial report that has been prepared for the use by the members of the Association in accordance with the requirements of the Australian Charities and Not-for-Profits Commission act 2012, the Corporations Act 2001 and Australian Accounting Standards and other authoritative pronouncements of the Australian Standards Board. A statement of compliance with the International Financial Reporting Standards (IFRS) cannot be made due to the Group Applying not-for-profit specific requirements contained in the Australian Accounting Standards.

The financial report covers Hawkesbury Area Women and Kids Services Collective Inc. as an individual entity.

The following is a summary of the material accounting policies adopted by the Board Directors who have determined that such policies are appropriate to meet the needs of the members in the preparation of the financial report. The accounting policies have been consistently applied unless otherwise stated.

A) Basis of preparation

The financial report has been prepared on an accruals basis and is based on historical cost and does not take into account changing money values or, except where stated, current valuations of non-current assets for which the fair value basis of accounting has been applied.

B) Accounting Policies

a) Plant and Equipment

Each class of property, plant and equipment is carried at cost less, where applicable any accumulated depreciation and impairment losses.

The carrying amount of plant and equipment is reviewed annually to ensure it is not in excess of the recoverable amount from those assets. The recoverable amount is assessed on the basis of the expected net cash flows that will be received from the assets employed and subsequent disposal. The expected net cash flows have not been discounted to present values in determining the recoverable amounts.

All other assets acquired during the year have been expensed at the date of purchase.

b) Depreciation

The depreciable amount of all fixed assets are depreciated over the useful lives of the asset to the Association commencing from the time the asset is held ready for use, or have been fully expensed as appropriate.

The asset residual values and useful lives are reviewed, and adjusted if appropriate, at each balance sheet date.

c) Employee benefits

Provision is made for the liability for employee entitlements arising from services rendered by employees to balance date. Employee entitlements have been measured at the amount expected to be paid when the liability is settled. Any re-measurements arising from experience adjustments and changes in assumptions are recognised in profit or loss in the periods in which the changes occur. The Committee has determined that these amounts are adequate.

d) Provisions

Provisions are measured at the estimated expenditure required to settle the present obligation, based on the most reliable evidence available at the reporting date, including the risks and uncertainties associated with the present obligation. No liability is recognised if an outflow of economic resources as a result of present obligations is not probable. Such situations are disclosed as contingent liabilities, unless the outflow of resources is remote in which case no liability is recognised. The Committee has determined that these outflows are adequate.

e) Income taxes

No provision for income tax has been raised as the entity is exempt from income tax under Div. 50 of the *Income Tax Assessment Act 1997*.

f) Cash and Cash Equivalents

Cash and cash equivalents comprise cash on hand and demand deposits, together with other short-term, highly liquid investments that are readily convertible into known amounts of cash and which are subject to an insignificant risk of changes in value.

g) Revenue

Revenue comprises revenue from government grants, fundraising, donations, interest and memberships.

Interest revenue is recognised on a proportional basis taking into account the interest rates applicable to the financial asset.

Revenue from the rendering of service is recognised upon the delivery of the service to the customers and is measured at fair value of the consideration received or receivable after taking into account any trade discounts and volume rebates allowed.

h) Government Grants

A number of the entity's programs are supported by grants received from the federal, state and local governments.

If conditions are attached to a grant which must be satisfied before the entity is eligible to receive the contribution, recognition of the grant as revenue is deferred until those conditions are satisfied.

Where a grant is received on the condition that specified services are delivered to the grantor, this is considered a reciprocal transaction. Revenue is recognised as services are performed and at year end a liability is recognised until the service is delivered.

Revenue from a non-reciprocal grant that is not subject to conditions is recognised when the entity obtains control of the funds, economic benefits are probable and the amount can be measured reliably. Where a grant may be required to be repaid if certain conditions are not satisfied, a liability is recognised at year end to the extent that conditions remain unsatisfied.

i) Goods and Services Tax (GST)

Revenues, expenses and assets are recognised net of the amount of GST, except where the amount of GST incurred is not recoverable from the Australian Taxation Office. In these circumstances, the GST is recognised as part of the cost of acquisition of the asset or as part of an item of the expense. Receivables and payables in the balance sheet are shown inclusive of GST.

Cash flows are presented in the statement of cash flows on a gross basis, except for the GST components of investing and financing activities, which are disclosed as operating cash flows.

j) Goods held for distribution

Donated goods and goods purchased for nominal consideration held for distribution are initially recognised at their current replacement cost at date of acquisition. Inventories of goods purchased and held for distribution are initially recognised at cost. The cost of bringing each product to its present location and condition is determined on a first-in, first out basis.

k) Economic dependence

The entity is dependent upon the ongoing receipt of Government grants and community fundraising to ensure the ongoing continuance of its programs. At the date of this report, management has no reason to believe that this financial support will not continue in the short term.

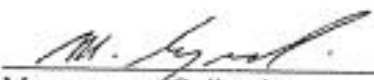
HAWKESBURY AREA WOMEN & KIDS SERVICES COLLECTIVE INC.

**Statement by Members of the Committee
For the year ended 30 June 2022**

In the opinion of the Committee the Statement of Financial Position, Statement of Financial Performance and Notes to the financial Statements:

1. Present fairly the financial position of Hawkesbury Area Women & Kids Services Collective Inc. as at 30 June 2022 and its performance for the year ended on that date in accordance with the requirements of the Australian Charities and Not-for-Profits Commission Act and Australian Accounting Standards, mandatory professional reporting requirements and other authoritative pronouncements of the Australian Accounting Standards Board.
2. An amount equal to the payments received for the year less any advance grants has been spent on the projects, and
3. Establishment of all accruals is justified, and
4. A full and complete set of financial records has been maintained, and
5. At the date of this statement, there are reasonable grounds to believe that the association will be able to pay its debts as and when they fall due.

This statement is made in accordance with a resolution of the Committee and is signed for and on behalf of the Committee by:


Management Collective


Management Collective

Dated this 28th day of September 2022

Hawkesbury Area Womens & Kids Collective

22 Bosworth Street
(P.O. Box 305)
RICHMOND NSW 2753

Balance Sheet [Last Year Analysis]

June 2022

ABN: 12 756 046 044

	This Year	Last Year
Assets		
Current Assets		
Cash On Hand		
Community Sector Bank Account	\$182,248.81	\$279,831.24
TD153563549 to 16/10/2022@0.4%	\$89,844.14	\$89,572.40
TD 141990044- 2/9/2022@0.3%	\$228,254.88	\$177,847.04
TD 144481025 - to 7/9/2022@0.2%	\$41,511.96	\$41,462.63
Womcot At Call Account 88	\$1,189.10	\$1,189.10
Debit Card Account	\$4,986.20	\$4,162.64
151847928 to 30/7/2022@0.2%	\$247,653.77	\$157,255.09
PayPal Account	\$4,330.78	\$52,313.18
Petty Cash - Cottage	\$100.40	\$175.10
Cottage Coles Card	\$200.00	\$258.93
Petty Cash - Emergency relief	\$200.00	\$150.00
Cash on Hand - Gabrielle Fund	\$200.00	\$200.00
Red - Petty Cash	\$110.70	\$43.60
Total Cash On Hand	\$800,830.74	\$804,460.95
Sundry Debtors	\$0.00	\$59,682.15
Total Current Assets	\$800,830.74	\$864,143.10
Plant & Equipment		
Plant & Equipment - At Cost	\$23,521.86	\$9,029.00
Plant & Equipment - Accum Dep	-\$20,040.86	-\$5,320.00
Total Plant & Equipment	\$3,481.00	\$3,709.00
Total Assets	\$804,311.74	\$867,852.10
Liabilities		
Current Liabilities		
Grants & Funding Provisions		
SSTF Grant Funding In Advance	\$0.00	\$40,000.00
2021 DV- COVID Grant-DSS	\$0.00	\$99,633.89
Provision- Natural Disasters Supports	\$17,472.32	\$15,350.11
Provision for Program Funds	\$46,710.11	\$101,789.45
DSS- Funding carried forward Redress	\$35,107.94	\$17,430.00
DSS - Building Grant	\$250,000.00	\$250,000.00
SSTF Grant -Open	\$20,000.00	\$0.00
SSTF 3	\$4,050.18	\$0.00
Paypal Donation Grant	\$26,724.58	\$0.00
Emergency Relief Provision	\$12,246.29	\$9,774.66
Unexpended Grant	\$12,000.00	\$2,000.00
JG Grant Unexpended	\$814.09	\$1,803.30
Gabrielle Fund provision	\$17,312.40	\$8,940.15
BuildingMatchingGrantgovtfunds	\$0.00	\$2,000.55
Provision for Client Christmas	\$4,650.39	\$4,487.02
Provision - Building	\$108,372.60	\$86,151.40
Provision for Governance	\$807.18	\$2,495.46
Total Grants & Funding Provisions	\$556,268.08	\$641,855.99
Other Current Liabilities		
Staff Fund Donations	\$187.24	\$186.34
Total Other Current Liabilities	\$187.24	\$186.34
GST Liabilities		
GST Collected	\$7,112.32	\$34,682.82
GST Paid	-\$5,014.75	-\$12,268.69
Total GST Liabilities	\$2,097.57	\$22,414.13

This report includes Year-End Adjustments.

Page 1 of 2

Hawkesbury Area Womens & Kids Collective

22 Bosworth Street
(P.O. Box 305)
RICHMOND NSW 2753

Balance Sheet [Last Year Analysis]

June 2022

ABN: 12 756 046 044

	This Year	Last Year
Payroll Liabilities		
PAYG Tax Payable	\$11,272.00	\$7,892.00
Accounts Payable	\$2,444.00	\$0.00
Provision for Training	\$2,040.61	\$2,708.04
Annual Leave Provision	\$73,845.74	\$67,865.72
Maternity leave provision	\$5,000.00	\$5,000.00
Long Service Leave Provision	\$13,285.75	\$10,790.49
Total Payroll Liabilities	\$107,888.10	\$94,256.25
Total Current Liabilities	\$666,440.99	\$758,712.71
Network Funds Held		
HSVPN Funds	\$0.00	\$2,532.76
HANADV Funds	\$4,264.48	\$2,050.71
METWEST Funds	\$0.00	\$260.06
White Ribbon Event Funds	\$0.00	\$265.40
Total Network Funds Held	\$4,264.48	\$5,108.93
Total Liabilities	\$670,705.47	\$763,821.64
Net Assets	\$133,606.27	\$104,030.46
Equity		
Retained Earnings	\$104,030.46	\$86,275.45
Current Year Surplus/Deficit	\$29,575.81	\$17,755.01
Total Equity	\$133,606.27	\$104,030.46

This report includes Year-End Adjustments.

Page 2 of 2

Hawkesbury Area Womens & Kids Collective

22 Bosworth Street
(P.O Box 305)
RICHMOND NSW 2753

Profit & Loss [With Year to Date]

July 2021 To June 2022

ABN: 12 756 046 044

	Selected Period	Year to Date
Income		
Recurrent funding		
DCJ Funding	\$409,728.56	\$409,728.56
50K Grant	\$65,225.00	\$65,225.00
SSTF Grant Funds	\$7,000.00	\$7,000.00
DSS Funding for Redress	\$351,076.32	\$351,076.32
Total Recurrent funding	\$833,029.88	\$833,029.88
Other grants		
LCSA Small Grants	\$5,000.00	\$5,000.00
LD & FV - Antiviolence project	\$2,800.00	\$2,800.00
DCJ - Christmas EXP Grant	\$60,000.00	\$60,000.00
BUPA Grant - for WIA Groups	\$10,000.00	\$10,000.00
Total Other grants	\$77,800.00	\$77,800.00
Other Income		
Donations - General	\$5,689.68	\$5,689.68
Go Fund Me net received	\$742.18	\$742.18
Donations - Gabrielle Fund	\$11,805.40	\$11,805.40
Donations - Emergency Relief	\$6,986.71	\$6,986.71
Donations - Christmas Hampers	\$360.00	\$360.00
Donations for Building Extension	\$20,067.34	\$20,067.34
Bank Interest	\$1,236.97	\$1,236.97
Memberships	\$50.91	\$50.91
Sundry Incomes	\$9,093.75	\$9,093.75
Court Costs Reimbursed	\$30.00	\$30.00
Total Other Income	\$46,969.19	\$46,969.19
Total Income	\$966,892.82	\$966,892.82
Gross Profit	\$966,892.82	\$966,892.82
EXPENSES		
Financial		
Insurance	\$6,778.37	\$6,778.37
Audit/Legal/Accounting	\$1,800.00	\$1,800.00
Licenses & Fees	\$53.00	\$53.00
Bank Charges	\$217.01	\$217.01
PayPal charges	\$21.07	\$21.07
Total Financial	\$8,869.45	\$8,869.45
Operating costs		
Occ Health & Safety	\$4,108.25	\$4,108.25
Cottage Consumables	\$663.71	\$663.71
Print	\$2,800.00	\$2,800.00
Postage	\$485.67	\$485.67
Stationery	\$963.00	\$963.00
Resources & Library	\$64.96	\$64.96
Subscriptions & Membership	\$3,813.95	\$3,813.95
Consultants	\$717.66	\$717.66
Management/Organisation	\$1,086.86	\$1,086.86
Total Operating costs	\$14,704.06	\$14,704.06
Equipment		
Equipment purchases	\$9,835.28	\$9,835.28
Equip Repairs & Maintenance	\$294.89	\$294.89
Depreciation	\$228.00	\$228.00

This report includes Year-End Adjustments.

Hawkesbury Area Womens & Kids Collective

22 Bosworth Street
(P.O. Box 305)
RICHMOND NSW 2753

Profit & Loss [With Year to Date]

July 2021 To June 2022

ABN: 12 756 046 044

	Selected Period	Year to Date
Photocopy Costs	\$1,987.89	\$1,987.89
Computer associated	\$917.66	\$917.66
Total Equipment	\$13,263.72	\$13,263.72
Employment Expenses		
Wages and Salaries		
Wages	\$624,113.63	\$624,113.63
Relief Wages	\$901.51	\$901.51
Workers' Comp Insurance	\$10,931.39	\$10,931.39
Other Employer Expenses	\$5,011.52	\$5,011.52
Annual Leave Taken + Prov	\$5,980.02	\$5,980.02
Long Service Leave Accrual	\$2,495.26	\$2,495.26
Superannuation	\$62,090.34	\$62,090.34
Total Wages and Salaries	\$711,523.67	\$711,523.67
Staffing expenses		
Supervision	\$4,939.09	\$4,939.09
Team building	\$89.18	\$89.18
Training/Seminars/Workshops	\$7,512.88	\$7,512.88
Staff travel costs	\$157.36	\$157.36
Car mileage	\$1,619.20	\$1,619.20
Total Staffing expenses	\$14,317.71	\$14,317.71
Total Employment Expenses	\$725,841.38	\$725,841.38
Client/Community ServicingCost		
Emergency Relief Fund	\$7,230.00	\$7,230.00
Emergency Relief Consumables	\$1,544.69	\$1,544.69
Christmas Expenses	\$1,399.16	\$1,399.16
NAIDOC Day expenses	\$27.27	\$27.27
The Gabrielle Fund	\$2,958.65	\$2,958.65
Reclaim the Night Grant Exp	\$24.21	\$24.21
Facilitator Expense	\$3,760.00	\$3,760.00
Community Engagement	\$21.45	\$21.45
Brokerage - Redress	\$3,600.82	\$3,600.82
Activity Costs	\$6,674.28	\$6,674.28
Venue/ Equipment hire	\$469.09	\$469.09
Catering & group consumables	\$250.73	\$250.73
Program costs	\$7,337.14	\$7,337.14
DCJ -XMAS Grant Exp	\$41,462.73	\$41,462.73
Promotional Advertising	\$500.00	\$500.00
Total Client/Community ServicingCost	\$77,260.22	\$77,260.22
Special Grant Expenses		
Other Grants Expenses	\$12,821.08	\$12,821.08
Total Special Grant Expenses	\$12,821.08	\$12,821.08
Occupancy Expenses		
Rent	\$8,920.01	\$8,920.01
Building maint & improvement	\$8,365.00	\$8,365.00
Garden Maintenance	\$1,500.00	\$1,500.00
Repairs and Maintenance	\$195.53	\$195.53
Utilities		
Telephone	\$2,485.49	\$2,485.49
Mobile Phone	\$2,339.30	\$2,339.30
Electricity	\$1,601.69	\$1,601.69
Water & Sewer Service	\$53.82	\$53.82
Total Utilities	\$6,480.30	\$6,480.30

This report includes Year-End Adjustments.

Page 2 of 3

Hawkesbury Area Womens & Kids Collective

22 Bosworth Street
(P.O. Box 305)
RICHMOND NSW 2753

Profit & Loss [With Year to Date]

July 2021 To June 2022

ABN: 12 756 046 044

	Selected Period	Year to Date
Total Occupancy Expenses	\$25,460.84	\$25,460.84
Total EXPENSES	\$878,220.75	\$878,220.75
Operating Profit	\$88,672.07	\$88,672.07
Transferred Income		
Management Contributions	\$79,570.00	\$79,570.00
Total Transferred Income	\$79,570.00	\$79,570.00
Transferred Expenses		
Management Contributions	\$79,570.00	\$79,570.00
Carry Forward future use	\$59,096.26	\$59,096.26
Total Transferred Expenses	\$138,666.26	\$138,666.26
Net Profit/(Loss)	\$29,575.81	\$29,575.81

This report includes Year-End Adjustments.

Page 3 of 3

Hawkesbury Area Womens & Kids Collective

22 Bosworth Street
(P.O. Box 305)
RICHMOND NSW 2753

Statement of Cash Flow

July 2021 To June 2022

ABN: 12 756 046 044

Cash Flow from Operating Activities

Net Income **\$29,575.81**

Red - Petty Cash	-\$67.10
Sundry Debtors	\$59,682.15
Plant & Equipment - At Cost	-\$14,492.86
Plant & Equipment - Accum Dep	\$14,720.86
SSTF Grant Funding In Advance	-\$40,000.00
2021 DV- COVID Grant-DSS	-\$99,633.89
Provision- Natural Disasters Supports	\$2,122.21
Provision for Program Funds	-\$55,079.34
DSS- Funding carried forward Redress	\$17,677.94
SSTF Grant -Open	\$20,000.00
SSTF 3	\$4,050.18
Paypal Donation Grant	\$26,724.58
Emergency Relief Provision	\$2,471.63
Unexpended Grant	\$10,000.00
JG Grant Unexpended	-\$989.21
Gabrielle Fund provision	\$8,372.25
BuildingMatchingGrantgovtfunds	-\$2,000.55
Provision for Client Christmas	\$163.37
Provision - Building	\$22,221.20
Provision for Governance	-\$1,688.28
Staff Fund Donations	\$0.90
GST Collected	-\$27,570.50
GST Paid	\$7,253.94
PAYG Tax Payable	\$3,380.00
Accounts Payable	\$2,444.00
Provision for Training	-\$667.43
Annual Leave Provision	\$5,980.02
Long Service Leave Provision	\$2,495.26
HSVPN Funds	-\$2,532.76
HANADV Funds	\$2,213.77
METWEST Funds	-\$260.06
White Ribbon Event Funds	-\$265.40

Net Cash Flow from Operating Activities **-\$3,697.31**

Cash Flow from Investing Activities

Net Cash Flow from Investing Activities **\$0.00**

Cash Flow from Financing Activities

Net Cash Flow from Financing Activities **\$0.00**

Net Increase/Decrease for the period **-\$3,697.31**

Cash at the Beginning of the period **\$804,217.35**

Cash at the End of the period **\$800,520.04**

Hawkesbury Area Womens & Kids Collective
22 Bosworth Street
(P.O Box 305)
RICHMOND NSW 2753

Equity Reconciliation
As of June 2022

Equity			
Retained Earnings balance as aty 30 June 2021			\$104,030
Current Year Surplus/Deficit for 2021-2022	Surplus		\$29,576
Equity Balance as at 30 June 2022			\$133,606
	Balance	Balance	Change
	1/07/2021	30/06/2022	
Retained Earnings	\$104,030	\$133,606	\$29,576
Total Equity	\$104,030	\$133,606	\$29,576
<p>Hawkesbury Area Womens & Kids Services Collective Inc does not have shares or owners, it is an Incorporated Association. All changes in equity are due to changes in retained equity from operations</p>			



Appendix 1] ACNC Summary

ACNC Listing for HAWKESBURY AREA WOMENS & KIDS SERVICES COLLECTIVE

Also known as: The Women's Cottage

ABN: 12756046044

Address: 22 Bosworth St, Richmond NSW 2753, Australia

Email: manager@womenscottage.org.au

Address For Service email: manager@womenscottage.org.au

Website: www.womenscottage.org.au

Charity Size: Medium

Who the charity helps:

Youth - 15 to under 25

Victims of crime (including family violence)

Financially disadvantaged people

Females

Families

Early childhood - aged under 6

Children - aged 6 to under 15

Adults - aged 65 and over

Adults - aged 25 to under 65

Date established: 1970

Last reported: 19 January 2021

Next report due: 31 January 2022

Financial Year End: 30/06

Summary of Activities: We are a community-based crisis support and resource centre, run by women, for women (and their children) who live, work or study in the Hawkesbury region. We specialise in supporting women experiencing domestic violence, isolation, financial distress, parenting distress and other forms of emotional distress or trauma. Our services are for all women with and without children.

Enforcement Action History: There have been no enforcements for this charity.

Appendix 2] How Can You Help?

How can you help? So glad you asked!

The Women's Cottage is only able to provide the extent of the services we do, the emergency relief and food supplies, and a full group program with the support of our local community. **If you or your place of work can support us in any way to help us support vulnerable women and children that would be wonderful.**

Christmas Appeal (Hampers and Toys):



You could give a cash donation or foods suitable for a Christmas hamper.

You could buy a gift for a child for Christmas and drop it in (we find it especially hard to get enough gifts for older children 12 – 16).

You could set up a Christmas tree / gift box at your work and encourage others to donate something as well.

Emergency Relief & Food Supplies: You could give a cash donation or non-perishable food supplies to help fill our food shelves for families struggling financially.

Building & Equipment Upgrades:

The Women's Cottage is in the process of expanding our premises to increase capacity for service provision. You could help us through individual, group or business fundraising and donations for things like:

Child's Play Area Equipment

Fit Out Costs

IT / Office furniture

Group Work and Program Resources



Responding to Domestic Violence:

The number of women seeking help in relation to escaping domestic violence significantly increased in past years. The complexity and risks faced by the women is also increasing. We often see women where police involvement is urgently needed, where there are guns involved, where we need to keep women safe at The Women's Cottage until Police arrive and/or where women and children are unable to safely leave and have their movements controlled or monitored.



Gabrielle Fund: Your cash donation will assist women escaping domestic violence.

Group Programs: Most of our group programs are funded solely by community donation. Even small donations can support us to continue to run a full group program and support women with a soft entry point to more support if needed.

If you want to run a fundraiser you might be able to raise enough to fund a whole group and you and/or your group, service or business can go on our sponsors list. A 10-week group costs us around \$8,000 to \$10,000.

Crisis and Counselling Support: We do not have the resources or worker time to meet current and growing needs for the number of women seeking safety from violence. Business, group, or community fundraising efforts will help us meet these needs.

Crisis Support – 1 day / week	1 year	\$30,000
	6 months	\$15,000
Counselling 1 day per week	1 year	\$30,000
	6 months	\$15,000

**For information or to donate phone us on 02 4578 4190
or visit: www.womenscottage.org.au**

ALL DONATIONS OVER \$2 ARE TAX DEDUCTIBLE

Appendix 3] Association Membership Application Form



THE WOMEN'S COTTAGE
HAWKESBURY AREA WOMEN'S & KIDS SERVICES COLLECTIVE INC.
ABN 12756046044

22 Bosworth Street (P.O. Box 305) Richmond NSW 2753
Phone: 02 4578 4190 Fax: 02 4578 2480
Email: womcot@pnc.com.au
Website: www.womenscottage.org.au

Application for Association MEMBERSHIP FORM

Name _____ DOB _____

Address _____

Phone _____ Mobile _____ Email _____

By making this application you are agreeing to support the Feminist philosophy, vision, and objectives of The Women's Cottage. For more information visit: www.womenscottage.org.au

Signed Date

Total \$2.00 (inc. GST) Pay by Cheque / Cash or Direct Debit to:

The Women's Cottage BSB: 633 000, Acc: 129 954 459
(reference: please add your name and 'membership')

Please tick one box:

Please post
completed
form to: The Women's Cottage
PO Box 305
Richmond NSW 2753

Or drop it in to: 22 Bosworth Street
Richmond NSW 2753
02 45 784190

Or email it to: manager@womenscottage.org.au

- ☐ Update contact details
☐ Renew membership
☐ New membership

Thank you for supporting and being part of The Women's Cottage - *always striving to meet the needs of women and children in the Hawkesbury area*. For more information about membership of The Women's Cottage please read Sections 3 and 4 of the Constitution.

Office Use - Receipt No



When Women
support each
other
incredible things
happen